



GUIDE TO
**RESIDENCE
HALL LIVING**

2026-2027



SEATTLE UNIVERSITY

CONTENTS

- 4 Housing Application Process
- 5 Housing Requirement
- 6 Housing Rates
- 7 Redhawk Residential Experience
- 9 Meet the Staff
- 10 First and Second Year Communities
- 13 What is Provided?
- 13 Third and Fourth Year Housing
- 14 Meal Plans and Dining
- 15 Dining Locations
- 16 Housing Application Process
- 17 Opening, Move-in, and Fall Welcome
- 18 Guide to Moving In
- 20 Directions to Campus for Move-In Day
- 21 Frequently Asked Questions
- 22 Important Resources and Services
- 24 Important Dates

CONGRATULATIONS!

You've been admitted to Seattle University. We are the premier independent university of the Northwest, rich in Jesuit tradition and heritage, located in a diverse world-class city.

Living on campus is an integral part of the educational experience. Students residing on campus are often more involved in activities and programs, achieve greater academic success, and graduate feeling more satisfied with their overall university experience.

In Housing and Residence Life, we will support you as you transition to living on campus and at Seattle University. The staff will provide you with resources and help you in making connections to university services, programs, and events. We foster a vibrant community where you can connect with your peers, engage with faculty and staff members, and participate in your new home.

Convenient access to campus resources, the bustling Capitol Hill and South Lake Union neighborhoods, and the beautiful Puget Sound region are just a few of the benefits of living on campus. Many alumni even share that some of their fondest college memories stem from the friendships they made and the activities they were involved in while living in the residence halls.

We look forward to assisting you with your housing assignment as well as your transition to campus. You can expect to be notified of your housing in late July. If you have any additional questions or need clarification, please visit our website at www.seattleu.edu/life-at-seattle-u/housing-dining/ or contact us at: 206- 296-6305 or housing@seattleu.edu.

Once again, welcome. We look forward to your arrival this fall!

-From the staff of Housing and Residence Life at Seattle University

HOUSING APPLICATION PROCESS

Welcome to Seattle University! Please review this guide to prepare you so you will be ready to complete your housing application starting April 1, 2026. You must confirm your enrollment at least one day prior to being able to access the [Housing Portal](#).

CONFIRM YOUR ENROLLMENT

- Activate your [SU Account](#).
- Submit your \$500 enrollment confirmation deposit by May 1 through your Redhawk Admissions Portal. Enrollment confirmations are due by May 1, 2026.
- Send immunization records to: [Student Health Center](#).

BEFORE APPLYING FOR HOUSING

- Go to the [Admitted First-Year Students](#) or [Admitted Transfer Students](#) page for more information.
- Starting on April 1, 2026 log into your [Orientation Portal](#) and begin tasks on your New Student Checklist

APPLYING FOR HOUSING

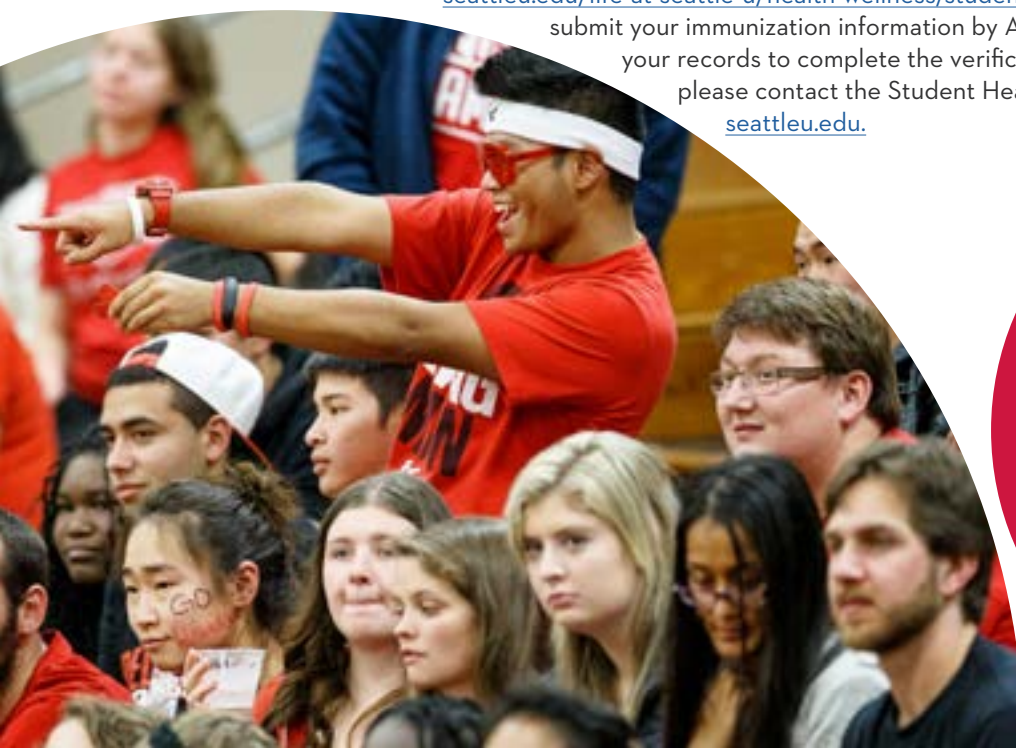
- On April 1, at 12 PM or later go to the [Housing Portal](#) to access the application.
- Priority housing applications due by June 1, 2026 / [Admitted Undergraduate First-Year Students](#)
- [Transfer Student](#) housing applications are accepted on a rolling basis any time after April 1.
- Transfer students are encouraged to apply as early as possible. / [Admitted Undergraduate Transfer](#)

ROOMMATE SEARCHING

- Optional roommate search opens May 12, 2026, at 12 p.m. PDT.
- Students can search for a roommate through the [Housing Portal](#).
- Roommate searching will only be available after completing the housing application.
- For students admitted to Cornish College of the Arts at Seattle University / South Lake Union Campus: Roommate searching will close on June 23, 2026 at 12 p.m. PDT.
- For all other students / First Hill Campus: Roommate searching will close on July 14, 2026 at 12 p.m. PDT.

IMMUNIZATIONS

Detailed information about Seattle University's immunization requirements for students can be found at <https://www.seattleu.edu/life-at-seattle-u/health-wellness/student-health-center/immunizations/>. Please submit your immunization information by August 15, 2026, to allow enough time for your records to complete the verification process. If you have any questions, please contact the Student Health Center at studenthealthcenter@seattleu.edu.



"I came in wanting to make friends. I really bonded with my roommates. These friends have shaped and influenced my college experience."

OLIVIA ANDERSON
Major: Nursing

HOUSING REQUIREMENT

Seattle University is committed to the education of the whole person, and the residential experience is considered an integral part of a student's education.

We are committed to providing as many students as possible with learning and life-enriching experiences that come from living in student housing. Living on campus supports and fosters personal connections, community membership and participation, convenience and proximity to academic and campus services, and care of residential students.

Research over the past 60 years shows that students who belong to a campus residential community have a more productive and more satisfying college experience than those who live off campus. Students who live on campus are more likely to:

- Take full advantage of campus resources.
- Be more involved in campus activities and educational programs.
- Take more credits per quarter.
- Achieve greater academic success.
- Be more satisfied with the overall university experience.

Seattle University students are required to live on campus and purchase, at minimum, the Residential Meal Plan when they fall into either one of the following categories:

- First-year or second-year students, and students under the age of 21 before the first day of fall quarter classes (including first- and second-year transfer students). This includes first- or second-year students with AP or Running Start Credits.
- Students still within two (2) years of their high school graduation date as of the first day of fall quarter classes, and under the age of 21.

Students who fall into one of the above categories are required to live on campus for the full academic year. If a student's status (class year, age, etc.) changes at any point during the academic year, the student will not be released from the Residential Housing Requirement during that academic year.

If a student submits a Student Housing Application, they accept and become responsible for the penalties or obligations, including financial penalties, that may be assessed for failing to adhere to the policy. While an exemption or cancellation from the Residential Housing Requirement may be subsequently granted on a case-by-case basis, the student may still be subject to obligations or penalties under this policy.

To see our full housing policy go to www.seattleu.edu/life-at-seattle-u/housing-dining/housing-policies/housing-requirement/

HOUSING ACCOMMODATIONS FOR STUDENTS WITH DISABILITIES

Disability-related housing accommodations are modifications to the residential environment for students whose disabilities substantially limit their ability to participate in residential life. Students requesting disability-based housing accommodations will need to meet with Disability Services staff and provide documentation supporting their request and disability-related needs.

Getting started with Disability Services: <https://www.seattleu.edu/disability-services/about-ds/applying-for-accommodations/>.

Accommodations for housing are approved on a case-by-case basis and are dependent on the nature of the disability and/or health condition as well as the impact on the campus living environment. Disability Services works in partnership with Housing and Residence Life to provide accommodations that meet individual students' needs.

Students should contact Disability Services as soon as possible as timely notice is needed to coordinate accommodations at 206-296-5740.

For more information on disability-based housing requests: <https://www.seattleu.edu/life-at-seattle-u/housing-dining/housing-policies/disability-accommodations/>

HOUSING RATES

Housing rates are charged to your student account on a quarterly basis. Payment is due by the date listed on your Student Financial Services billing invoice.

CAMPION, BELLARMINE, AND XAVIER AT THE FIRST HILL CAMPUS

DOUBLE ROOMS

Double Rooms are equipped with two wardrobes, two desks, chairs, and beds.

DOUBLE PLUS ROOMS

A limited number of rooms in Bellarmine and Campion are available as Double Plus. These larger rooms are equipped with two wardrobes, two desks, chairs, and beds.

TRIPLE ROOMS

A limited number of rooms in Bellarmine and Campion are available as Triple rooms. These larger spaces are a nice compromise between space and affordability and are equipped with three wardrobes, three desks and chairs.

	QUARTERLY RATE	ANNUAL RATE
DOUBLE ROOM: Bellarmine / Campion / Xavier	\$3,330	\$9,990
DOUBLE PLUS ROOM: Bellarmine / Campion	\$3,430	\$10,290
TRIPLE PLUS ROOM: Bellarmine / Campion	\$2,740	\$8,220

CCASU / THE COMMONS AT THE SOUTH LAKE UNION CAMPUS

DOUBLE ROOMS

Double Rooms are equipped with two open closets, desks, hutches, chairs, beds, and a private bathroom.

DOUBLE WITH KITCHENETTE

A limited number of kitchenette rooms are available. They are equipped with two open closets, desks, hutches, chairs, beds, a private bathroom, and a kitchenette.

TRIPLE ROOMS

These larger spaces are a nice compromise between space and affordability and are equipped with three open closets, desks, hutches, chairs, beds, and a bathroom.

CCASU RATES	SEMESTER RATE	ANNUAL RATE
DOUBLE ROOM: The Commons	\$5,636	\$11,272
DOUBLE WITH KITCHENETTE: The Commons	\$7,148	\$14,296
TRIPLE ROOM: The Commons	\$5,020	\$10,040

FLOOR PLANS

All rooms come with a bed, desk, chair, and wardrobe with drawers for each student. The furniture is modular and can be moved. Beds can be bunked or raised. Rooms also have sinks, a micro-fridge, and shelves.

For more information on room layouts please go to the following links:

Bellarmine Hall	Xavier Hall
Campion Hall	The Commons



REDHAWK RESIDENTIAL EXPERIENCE

We believe that learning and academic inquiry are activities that happen both inside and outside of the classroom. Living on campus is more than just having a place to stay—it's about becoming part of a vibrant, supportive, and dynamic community where you can truly thrive.

WELCOME TO THE REDHAWK RESIDENTIAL EXPERIENCE (RRE) AT SEATTLE UNIVERSITY!

At Seattle University, we are committed to the Jesuit value of educating the whole person. Living on campus is an integral part of this experience, offering students the opportunity to engage with campus resources fully, be more involved in the community, achieve greater academic success, and graduate with a higher level of satisfaction.

Through our Redhawk Residential Experience, we build our community and foster academic success and student growth and development. It is a guided program with three primary goals throughout the year to assist our students in their learning and development: 1. Cultivating Connection in the Fall Quarter, 2. Fostering Self-Discovery and Personal Growth in the Winter Quarter, and 3. Empowering Inclusive and Diverse Communities in the Spring Quarter.

GOALS

Each goal has specific sub-goals that guide our efforts. We use a variety of engagement and learning strategies to bring the Redhawk Residential Experience (RRE) to life, making it a truly enriching experience for our students.

I. CULTIVATING CONNECTION

- **Build Meaningful Relationships:** Connect with fellow students, faculty, and staff to create lasting friendships and a strong support network.
- **Engage with the Community:** Participate in campus traditions and events that celebrate Seattle University's spirit and pride.
- **Explore Seattle:** Appreciate and engage with the vibrant city of Seattle, enhancing your college experience beyond the campus.

2. FOSTERING SELF-DISCOVERY AND PERSONAL GROWTH

- **Discover Your Values:** Reflect on your experiences to identify your core values and set personal goals.
- **Pursue Your Passions:** Explore new hobbies and interests that align with your passions and contribute to your personal growth.
- **Reflect and Grow:** Understand how your reflections impact your academic and personal development.



3. EMPOWERING INCLUSIVE AND DIVERSE COMMUNITIES

- **Learn and Respect History:** Understand the historical roots of Seattle University and the surrounding Capitol Hill area, including the culture of the Coast Salish Peoples.
- **Embrace Jesuit Principles:** Articulate the core principles of Jesuit education and how they shape your future.
- **Promote Inclusion:** Engage in conversations with peers from diverse backgrounds to foster understanding and inclusion.

ENGAGEMENT AND LEARNING STRATEGIES

Our RRE is brought to life through a variety of engaging and interactive strategies:

- **Self-Guided Programming:** Enjoy creative and informative bulletin boards, door decorations, and other initiatives that make your living space vibrant and welcoming.
- **Community Connections:** Participate in events organized by Resident Assistants (RAs) that focus on building connections within your community.
- **Hawk Talks:** Have meaningful one-on-one conversations with RAs to discuss your experiences and aspirations.
- **Take To:** Join RAs and fellow residents in exploring campus and local events, making the most of your time at Seattle University.

Living on campus at Seattle University offers you the opportunity to be at the heart of a supportive community where you can grow academically, personally, and socially. You'll have access to resources, support systems, and opportunities to enrich your college experience and prepare you for a successful future. It will provide resources and help you connect to university services, programs, and events. We foster a vibrant community where you can connect with your peers, engage with faculty and staff, and participate in your new community.

We are excited for you to join our community, participate in the Redhawk Residential Experience, and make the most of your time at Seattle University!

RESIDENTIAL LEARNING COMMUNITIES

Residential Learning Communities are thematic, non course-based communities where students explore shared interests alongside peers, faculty, and staff. Integrated into the Redhawk Residential Experience, RLCs promote connection, personal growth, and inclusive community building. While designed for on campus residents, programs and events remain open to all Seattle University students.

Bellarmino Hall

- **Catalyst RLC (Innovation & Entrepreneurship):** Supports creativity, problem solving, and entrepreneurial thinking through collaborative projects and mentorship. Sample activities include partnering with Albers School and the Center for Business Ethics, participating in Innovation Labs, design sprints, and pitch nights.
- **Pathways of Purpose RLC (Faith, Meaning & Purpose):** Helps students reflect on identity, purpose, and spirituality through Ignatian principles. Activities include interfaith dinners, "Big Questions" discussions, retreats, and opportunities for contemplative practice.

Campion Hall

- **Cura Terra RLC (Climate & Sustainability):** Encourages sustainable living and ecological engagement. Programs include partnering with the Institute for Catholic Thought and Culture, hosting reflection sessions, maintaining a community garden, and joining Earth Month initiatives.

- **Balance and Being RLC (Well-Being & Creative Expression):** Centers on holistic wellness and the arts. Programs include student showcases, partnerships with arts and communication faculty, journaling projects, cultural outings, wellness workshops, and collaborations with Nursing, CAPS, UREC, and WHP.

Xavier Hall

- **Atlas RLC (Global Engagement):** Builds intercultural awareness and global citizenship. Opportunities include study abroad event debriefs, partnerships with the International Student Center and Modern Languages, world news café conversations, and international nights.

Xavier Hall offers a smaller, more tightly-knit community that I thoroughly enjoyed and would recommend to students."

SAM KNOWLES
Major: Philosophy

MEET THE STAFF

The Department of Housing and Residence Life (HRL) is staffed by many people with whom you will interact while living in your on-campus community. The central office staff includes the Director, Associate Directors, Assistant Director, and the Office Manager. We are available to assist and support our residents. Each of your residential communities is staffed by full-time professionals, graduate staff, and student staff here to offer support, coordination, and leadership within their communities. Below you can find a brief description of the staff members you will meet when you move in!

RESIDENTIAL COMMUNITY COORDINATOR (RCC)

The RCC staff is responsible for coordinating and supervising one or more of Seattle University's residential communities. They supervise the Assistant Residential Community Coordinator(s), Resident Assistants, and Desk Staff, assist residents with personal or academic concerns, serve as a resource for residents, manage the many and varied administrative functions of the communities, and meet with students to assist with various concerns.

ASSISTANT RESIDENTIAL COMMUNITY COORDINATOR (ARCC)

The ARCC staff are graduate students at Seattle University. The primary role of the ARCC position is to assist the RCC with the functions of the residential community, including advising the hall council and helping supervise the RA staff. The RCCs and ARCCs have extensive training and education in student learning and development.

RESIDENT ASSISTANT STAFF (RA)

RAs serve as peer advisors, community builders, and student resource connectors. In addition, RAs are an integral part of your educational experience at Seattle U and support you as you transition to living on campus. Your RA will provide you with resources across campus and engage you in making connections to University services and programs. Your RA will also work towards fostering a vibrant community where you can connect with your peers and call Seattle University your home.

RESIDENT MINISTERS (RM)

The Resident Minister lives as a member of the residence hall community. They build relationships with residents and serve as a member of the residence hall staff. The Resident Minister is responsible for fostering pastoral care for students and staff in the residence halls in collaboration with Jesuits in Residence, Residential Life staff, and Campus Ministry staff. RMs are faculty and staff members at Seattle University.

JESUITS IN RESIDENCE

Most residence hall communities have a Jesuit in Residence who is a member of the Jesuit community at Seattle University. They are available for advice, counseling, assistance with conflict resolution, and listening if you want to talk. Many of our Jesuits are faculty or staff members at Seattle U.

DESK STAFF

Desk Coordinators (DC) and Desk Assistants (DA) are student workers responsible for disseminating information, checking out equipment to residents, communicating University and Housing policy, answering questions for students and the public, monitoring the security of the hall from the front desk, and sorting and distributing mail.



FIRST AND SECOND YEAR STUDENT COMMUNITIES



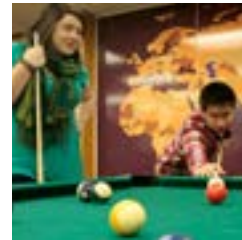
BELLARMINE

Bellarmine Hall houses approximately 400 residents who enjoy easy access to all campus locations. Rooms contain modular furniture and micro-fridges (combination microwave/refrigerators). All floors have student lounges for socializing and studying. On the lower level of the building, residents have access to a kitchen and an education center, complete with a study lounge and private study rooms for residents. The Bellarmine Advising Center and Health Center are located on the first floor adjacent to the main lobby.



CAMPION

Campion Hall is on the south side of campus, next to the Archbishop Thomas Murphy Apartments. Rooms contain modular furniture and micro-fridges (combination microwave/refrigerators). This 12-story building houses approximately 650 residents who enjoy beautiful views of Seattle, Elliott Bay, and the Olympic and Cascade Mountain ranges from its 12th-floor study lounge. All floors have furnished lounges with a kitchenette for student use. An ecumenical chapel and multi-faith prayer room are located off the main lobby. "The Cave," a convenience store, is on the building's lower level and provides everything from soap and toothpaste to sandwiches, beverages, and snacks.



XAVIER

Xavier Hall is located on the north end of campus and houses Xavier Global House. Roughly 180 residents live in Xavier. Because of its size, Xavier residents enjoy a noteworthy sense of community and find it easy to know each other by name. Each room has modular furniture and a micro-fridge. On the lower level is an education suite with two classrooms, a seminar room, and a large kitchen. An adjacent basement lounge and game room are equipped with a gaming TV and are ideal for planned or spur-of-the-moment gatherings. On the first floor, Xavier is home to the Modern Languages and Literature department.

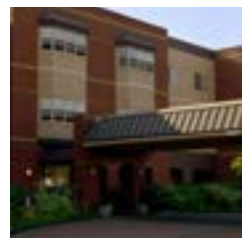
CCASU/SOUTH LAKE UNION



THE COMMONS

The Commons at South Lake Union is a creative, supportive community designed to support students at every stage of their college journey. Located in the vibrant South Lake Union neighborhood on the Cornish College of the Arts at Seattle University (CCASU) campus, The Commons offers an inspiring environment to create, perform, and connect. With state of the art facilities, stunning 20th-floor views, and thoughtfully designed shared spaces, The Commons is an ideal place to live, learn, and collaborate. The Commons offers Double, Triple, and Single rooms with bathrooms. Some rooms include kitchenettes.

SECOND YEAR/SOPHOMORE STUDENT HOUSING



CHARDIN

Chardin is located on the south side of the First Hill campus, adjacent to Campion Hall. Approximately 148 second-year students enjoy four-person suites that include two double rooms adjoined by a private bathroom. Each floor has study rooms, a community room, a kitchen, and a laundry room.



YOBI

Yobi is located on the northeast side of the First Hill campus adjacent to the Alumni Building. 45 second-year and above students live in single rooms with private bathrooms. Each floor has a shared kitchen and a study room.





WHAT'S PROVIDED?

There are common features among the halls. Each residence hall offers quiet study rooms, lounges, and computer labs. Washers, dryers, and vending machines are also provided in each building.

Seattle University and the residential communities are smoke-free. Please consider that your residence hall room is probably not as large as your bedroom at home and that you will share space with a roommate. All rooms are carpeted and furnished with the following:

- A bed for each resident. Beds can be lofted or bunked. XL twin beds are provided in all residence halls except Xavier. Xavier has twin beds.
- Modular wardrobes with drawer space for each resident. The Commons and apartments are equipped with closets.
- Bookshelf space.
- A sink and mirror.
- A combination refrigerator, freezer, and microwave.

SERVICES AND AMENITIES

- Service Desk Operations for mail and packages
- Computer & Printing Services
- Study Lounges & Study Spaces
- Laundry Facilities
- Community Kitchens
- Music & Game Rooms
- Custodial Services
- Maintenance Services

CAMPUS NETWORK

Wireless network service is available throughout the residence halls and campus. For more information or assistance please get in touch with the ITS Help Desk at 206-296-5571 or servicedesk@seattleu.edu or visit ITS Knowledge Base at <https://seattleuniversity.atlassian.net/wiki/spaces/ISD/overview>

THIRD AND FOURTH YEAR HOUSING



MURPHY APARTMENTS

The Archbishop Thomas Murphy Apartments offer a variety of living options for returning and upper-division students. Located adjacent to Campion, these apartments consist of five buildings.

Students can choose from different apartment and room types, including studios, one-bedroom units, townhouses, and four-bedroom apartments. Each unit is equipped with a kitchen, furniture, and all utilities are included (electricity, heat, water, sewer, compost, recycling, and trash). The apartments provide a secure, attractive, diverse living environment, fostering community and independence.



THE COMMONS

The Commons at South Lake Union offers a supportive and convenient living experience for upper division students. Located in the vibrant South Lake Union neighborhood on the Cornish College of the Arts at Seattle University (CCASU) campus, it provides an inspiring environment with convenient access to campus resources.

Featuring modern facilities, stunning 20th-floor views, and thoughtfully designed shared spaces, The Commons is an ideal place to live and learn. Students can choose from double, single, and triple rooms, all with private bathrooms, and many units include kitchenettes. The Commons blends affordability, comfort, and convenience for every student.



VI HILBERT HALL APARTMENTS

Vi Hilbert Hall is located on the north end of campus next to Xavier and the Bookstore and provides housing for about 300 upper-division students.

This building offers great amenities, are furnished, have great views of downtown, and the convenience of living on campus for juniors, seniors, and students over the age of 21. It is also conveniently located next to the new Rapid Ride G Line. Vi Hilbert Hall offers studios, one-bedroom, and four-bedroom options for students.



THE DOUGLAS APARTMENTS

The Douglas Apartments are located on 12th Ave between the sports fields and provide housing for about 250 upper-division students.

These apartments have full kitchens, are furnished, and offer juniors, seniors, and students over the age of 21 an off campus experience while still enjoying the amenities of living on campus. Options includes studios, one-bedroom, two-bedrooms, three, four, and five bedroom options for students.

MEAL PLANS AND DINING

All food service locations at Seattle University are managed by Redhawk Dining, known for their excellence and innovative approach to sustainable food service. Seattle University's food services have been recognized for outstanding food quality and customer service. With a commitment to high standards and environmental impact, produce is organic and locally grown whenever possible.

Seattle University's meal plans offer quality, variety, flexibility, and value. Items are priced à la carte, allowing students to choose exactly what they want. The Residential Meal Plan is the minimum required plan for first- and second-year students. The meal plan selected for the Fall quarter will automatically renew each quarter unless changed within the first 10 class days of each quarter.

During the academic year, up to \$250 may be rolled into the next quarter. At the end of each quarter, any remaining funds, excluding the \$250, will be removed from the meal plan. At the end of the spring quarter, no funds will be rolled over, and all remaining funds will be removed from the meal plan. Remaining funds are not refundable. Meal plan dollars can be spent at all dining locations.

For more information on meal plans and dining please refer to our website at: <https://www.seattleu.edu/life-at-seattle-u/housing-dining/dining/>

REDHAWK DINING

Dining operates fifteen diverse food service locations on campus. While hours of operation vary by location, you can always find something open between 7:00 a.m. and 10:00 p.m., seven days a week. For specific hours for each location, please refer to our dining website.

For more information about hours of operation and menus for each dining location please visit: DineOnCampus.com/SeattleU



MEAL PLANS FOR FIRST AND SECOND YEAR STUDENTS LIVING ON CAMPUS

FIRST HILL CAMPUS MEAL PLANS	COST PER QUARTER
MAXIMUM For extra hearty eaters	\$3,216
EXPANDED For hearty eaters eating mostly on campus	\$2,679
RESIDENTIAL REQUIRED minimum meal plan for all first- and second-year students regardless of building/room assignment.	\$2,142

MEAL PLANS FOR STUDENTS WHO ARE NOT REQUIRED TO PURCHASE A MEAL PLAN

	COST PER QUARTER
RESTRICTED A A meal plan only for those who are not required to purchase a meal plan.	\$1,608
RESTRICTED B A meal plan only for those who are not required to purchase a meal plan.	\$1,073
CONVENIENCE Minimal meal plan for those who are not required to purchase a meal plan.	\$536

CCASU SOUTH LAKE UNION CAMPUS MEAL PLANS	COST PER SEMESTER
EXPANDED For hearty eaters eating mostly on campus	\$3,424
RESIDENTIAL REQUIRED minimum meal plan for all first- and second-year students regardless of room assignment.	\$2,738
COMMUTER Minimal meal plan for those who are not required to purchase a meal plan.	\$926

DINING LOCATIONS FIST HILL CAMPUS

CHERRY STREET MARKET

OPEN FOR BREAKFAST, LUNCH AND DINNER 7 DAYS A WEEK

Located on the second floor of the Student Center, the Cherry Street Market is the largest dining room on campus. Cherry Street includes the following locations:

- **Home Base:** For each meal period we serve a diverse array of comfort foods.
- **Fusion:** Home to a blend of Asian flavors with a weekly rotating menu!
- **Capitol Hill Deli:** West Coast deli flavors with fresh produce, grains and local breads Create and build the sandwich of your dream or try one of our daily features.
- **Revolution:** A student favorite that provides made-to-order customizable pasta!
- **Red Hot Rudy's:** Your most loved grill items available daily. Enjoy signature burgers, fries, chicken tenders, tater tots and special features.
- **Thrive Without 9:** Our allergen friendly station! These dishes are prepared without dairy, eggs, fish, shellfish, peanuts, tree nuts, soy, sesame, and wheat gluten. Prepared in a kitchen where allergens may be present.
- **The Market:** Stop in for the made-to-order poke bowl, sushi, beverages, snacks, grab and go items, delectable pastries and more.
- **Puget Pour:** In addition to an extensive drink menu, students can order signature toast or customize their own!
- **Salad Bar:** Find all of your salad needs here with rotating features!

HAWK'S NEST BISTRO: An evening favorite located on the third floor of the Student Center. Students enjoy pizzas, wings, and ice cream!

THE CAVE: In the basement of Campion Hall. Here you will find a full market for all your essentials, snacks and produce needs. Includes many other items for your convenience including toothpaste, laundry detergent, and many others.

THE BYTE: Located in the Lemieux Library and McGoldrick Learning Commons. Enjoy pastries, local grab & go, Lotus Energy Drinks, Smoothies, & Blended Frappes, and an espresso bar.

THE SIDEBAR: In the Sullivan Law Center. Enjoy sandwiches, pastries, and Boon Boona Coffee

THE BOTTOM LINE: In the Paccar Atrium in Pigott. Home to a full espresso bar and the beloved Blazing Bagels! Here you can find assorted bagels, breakfast bagels, and even bagel dogs.

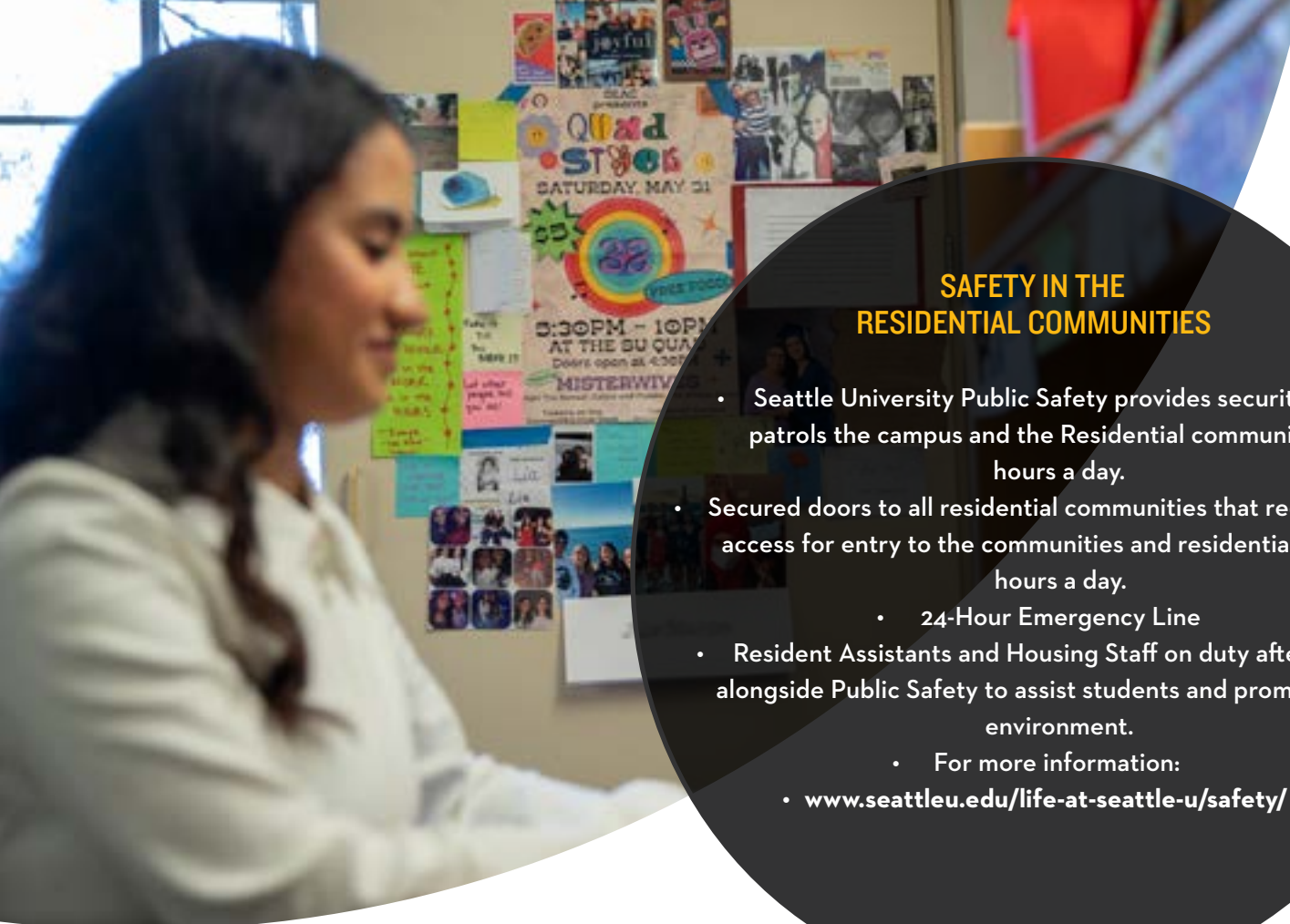
CONVERGENCE ZONE: In the Senegal Center. Our first plant-based dining location that offers coffee, milk alternatives, plant-based dining options, and build-your-own Acai Bowls.

DINING LOCATIONS SOUTH LAKE UNION

NELLIE'S CAFE: In the SLU Main Campus Center, a vibrant on-campus gathering spot, fresh, sustainable, and globally inspired dishes reflect the creativity of the community it serves. The cafe offers an ever changing menu, pop up collaborations, and comforting favorites that keep students coming back. Whether you're craving inventive cuisine or classic comfort food, Nellie's delivers a warm, artistic dining experience at the heart of campus.

NELLIE'S ESPRESSO: Located in the SLU Main Campus Center, Nellie's Espresso serves up far more than great espresso and coffee—offering convenient grab-and-go bites, hosting rotating food trucks, and providing evening dining options that keep the campus fueled well into the evening.





SAFETY IN THE RESIDENTIAL COMMUNITIES

- Seattle University Public Safety provides security and patrols the campus and the Residential communities 24 hours a day.
- Secured doors to all residential communities that require card access for entry to the communities and residential floors 24 hours a day.
 - 24-Hour Emergency Line
- Resident Assistants and Housing Staff on duty after hours alongside Public Safety to assist students and promote a safe environment.
 - For more information:
 - www.seattleu.edu/life-at-seattle-u/safety/

HOUSING APPLICATION PROCESS

To complete the Housing Application, new students will need to take the following steps:

- 1 The Housing Application opens on the [Housing Portal](#) at 12 PM PDT on April 1, 2026. You must confirm your enrollment at least one day prior to being able to access the [Housing Portal](#).
- 2 To login to the [Housing Portal](#), you will need your SU email account, your SU ID, and your SU email account password.
- 3 To access the Housing Application and Exception forms, click on “Complete a Housing Plan” on the right side of the screen after logging in.
- 4 Please complete all applicable pages and be sure to click “submit” to complete your application by June 1, 2026.
- 5 Roommate Searching
 - Students have the option to search for roommates using our roommate searching process in the [Housing Portal](#).
 - Roommate searching will be available starting May 12, 2026, at 12 p.m. PDT.
 - Roommate matching will close on June 23, 2026 at 11:59 p.m. PDT for CCASU/South Lake Union Campus students and July 15, 2026, at 11:59 p.m. PDT for First Hill Campus students.
- 6 Room assignments and roommate contact information will be available on July 7, 2026 by 4 p.m. PDT for CCASU/South Lake Union Campus students and July 14, 2026, at 11:59 p.m. PDT for First Hill Campus students. Reach out and start building a good relationship with your roommate when you have their information.
- 7 Additional move-in information and move-in appointments will be available for you to select starting July 14, 2026 for South Lake Union August 5, 2026 for First Hill.
- 8 Pack up and get ready for move-in on September 3, 2026 for South Lake Union and September 19, 2026 for First Hill! We will see you then!

OPENING, MOVE-IN, AND FALL WELCOME

The residence halls open for new first-year and transfer students at 9 a.m. After move in, students attend Fall Welcome activities. These events and activities introduce new students to classmates, staff, faculty, the campus, and the city. For more information about Fall Welcome, contact Orientation Programs at 206-296-2525 or orientation@seattleu.edu. Learn more at <https://www.seattleu.edu/admitted-students/orientation/>.

MAKE YOUR EXPERIENCE A SUCCESS

Once you arrive on campus, help make your living experience a success with these 10 tips:

- 1 Check-in with Orientation at your residence hall. Download the Orientation app to view your Fall Welcome schedule and be sure to attend orientation events!
- 2 Check into your residence hall and move into your room.
- 3 Meet your Resident Assistant (RA) right away. This student leader is a great resource and can help you get adjusted to Seattle University and campus life.
- 4 Attend your Residence Hall floor meetings and become familiar with the Resident Handbook.
- 5 Learn fire and emergency procedures as soon as possible. Locate all emergency exits close to your room.
- 6 Remember that each roommate, including you, is an individual with unique beliefs, opinions and experiences.
- 7 Adjusting to a roommate requires compromise and negotiation. This is a two-way adjustment.
- 8 Sit down and complete your roommate agreement with your roommate. Your RA will go over the agreement with you during the first few weeks of school.
- 9 Don't keep to yourself. There's a new, wide, exciting world out there. Reach out and make new friends.
- 10 Don't hesitate to ask questions. Housing and Residence Life staff members are here to help you become comfortable in your new surroundings.



GUIDE TO MOVING IN

WHAT TO BRING

Don't worry if you forget something! Most items can be purchased at the Campus Store and The Cave (convenience store). Remember when packing that you are sharing your space with another student. Think about the things you need first!

SLEEP

- Sheet sets (XL twin for all rooms, Xavier regular twin)
- Pillows
- XL Bedspread or comforter
- Mattress topper

BATH

- Toothbrush, toothpaste
- Brush/comb
- Shaving needs
- Shampoo
- Bath soap/body wash
- Toiletry caddy
- Shower shoes (flip flops)
- Towels: bath, hand, washcloths
- Hair dryer (quiet)
- Bathrobe

CLOTHING CARE

- Laundry soap
- Laundry basket
- Hangers
- Iron (community ironing boards available)

ORGANIZE AND OTHERS

- Under bed storage
- Hooks/3M Command strips (Only install on wardrobes)
- Painter's tape/blue tape
- Backpack/Bookbag
- Umbrella
- Tissues
- First Aid Kit
- All-Purpose Cleaner
- Disinfecting wipes/Paper towels
- Magnets
- Posters, photos (Do not put holes in walls)

STUDY

- Desk lamp
- Desk organizers
- Book light
- Pens, paper, and notebooks

GO GREEN! SUSTAINABLE PACKING TIPS

- Pack items with clothes, towels, newspapers, or items that can be recycled or reused after you've unpacked. Styrofoam packing peanuts cannot be recycled, are bad for the environment, and are a pain to throw away.
- Pack items in bags you will need during the year, such as your backpack or suitcases. This stops extra waste from being tossed after the moving process.
- For heavier items, use large plastic containers that can be reused later for room storage.
- Recycle your old cardboard boxes you have at home so you don't need to purchase new ones or get used boxes from some of your local businesses. Many of them will give them to you for free!
- Recycle any cardboard boxes or packaging waste that you may have after you have moved in.

PERSONAL INFO AND ID

- State ID and /Passport (these are important if you plan to work on campus)
- Health Insurance Information
- [Personal Property/Renters Insurance](#)

TECH

- Laptop/Computer
- Surge protector (no extension cords)
- Ethernet cable
- Laptop lock/accessories
- Headphones/earbuds
- Tablet
- Extra chargers

EAT

- Plates & bowls
- Cups & mugs
- Eating utensils
- Water bottle
- Can opener
- Coffee maker/electric kettle (auto shut off only)
- Rice Cooker (auto shut off only)
- Water Pitcher/Filter

EXTRAS

- Fan
- Personal Safe or Lock Box
- Sewing kit
- Bike/bike lock
- Sleeping bag (for retreats)
- Battery powered flashlight
- Earthquake kit (flashlight and radio, batteries, bottled water, first-aid items, supply of prescribed medication)

REMINDERS

- Please note that all residence hall rooms come equipped with micro-fridges.
- Remember that you will share residence hall room, so don't bring all of your belongings.
- Please review the Resident Handbook for more information on what you may bring or should leave at home: <https://redhawks.sharepoint.com/sites/Intranet-Housing/SitePages/ResidentHandbook.aspx>

APARTMENTS

In addition to the items listed, you may want to bring the optional items listed below. Microwaves and full refrigerators are provided in all apartments.

KITCHEN

- Serving dishes
- Utility knife/serving spoon
- Cutting board
- Pots & pans
- Cookie sheet, cake/pie pans
- Mixing bowls
- Measuring cups/spoons
- Dish towels
- Hot pads

CLEANING

- Non-abrasive bathroom cleaner
- Dish soap
- Dusting spray/cloths
- Oven cleaner
- Dish sponge
- Dish drying rack
- Bath
- Shower curtains

OTHER

- Floor and table lamps (halogen prohibited)

WHAT NOT TO BRING

- Candles
- Oil lamps
- Any appliance over 700 Watts
- Electric cooking equipment
- Any electrical appliance that has a heating element
- Extension cords
- Weapons/ammunition of any kind
- Halogen lamps
- Toaster ovens
- Bed risers
- Personal wireless router, as it will interfere with the wireless internet provided to your fellow residents

Check out the Resident Handbook for more dos and don'ts in the residence halls <https://redhawks.sharepoint.com/sites/Intranet-Housing/SitePages/ResidentHandbook.aspx>



DIRECTIONS TO CAMPUS FOR MOVE-IN DAY

TRAVELING BY AIR

The airport closest to us is Sea-Tac International Airport. All kinds of information may be found on their website at www.portseattle.org/sea-tac/ground-transportation. It is approximately fifteen miles from us.

TRAVELING BY TRAIN

The Amtrak station is located at 303 South Jackson Street, adjacent to King Street Station in Seattle. Take a taxi from the station.

TRAVELING BY BUS

The Greyhound station is located at 503 South Brougham Way in Seattle. Take a taxi from the station.

DRIVING TO SEATTLE UNIVERSITY FIRST HILL CAMPUS

FROM THE NORTH

- Head south on I-5
- Take Exit 165A to James Street
- Left onto James Street
- Left onto 12th Avenue

FROM THE EAST (I-90)

- Head west on I-90 toward Seattle
- Take Exit 2C toward I-5 North
- Take the James Street exit
- Right onto James Street
- Left onto 12th Avenue

FROM THE SOUTH

- Head north on I-5
- Take Exit 164A to James Street
- Right onto James Street
- Left onto 12th Avenue

FROM THE EAST (520)

- Head west on WA-520
- Merge onto I-5 South toward Portland
- Take exit 165A to James Street
- Left onto James Street
- Left onto 12th Avenue

DRIVING TO SEATTLE UNIVERSITY SOUTH LAKE UNION CAMPUS

FROM THE NORTH

- Head south on I-5
- Take Exit 165A toward James Street
- Continue onto 6th Ave
- Turn right onto Lenora Street

FROM THE SOUTH

- Head north on I-5
- Take Exit 164A toward James Street
- Keep right to stay on 6th Ave
- Turn right onto Lenora Street

FROM THE EAST (I-90)

- Head west on I-90 toward Seattle
- Take Exit 2C toward I-5 North
- Merge onto I-5 North
- Take Exit 165A
- Continue onto 6th Ave
- Turn right onto Lenora Street

FROM THE EAST (520)

- Head west on WA-520
- Merge onto I-5 South toward Portland
- Take Exit 165A
- Continue onto 6th Ave
- Turn right onto Lenora Street

BELLARMINE HALL

1111 E. Columbia Street, Seattle, WA 98122
Desk Telephone: (206) 296-6280

Bellarmine Hall is located between East Columbia Street and East Cherry Street at about the middle of campus.

BELLARMINE MOVE-IN DAY

Turn into E. Marion off 12th Avenue (main entrance). There will be Public Safety Officers to direct you to Bellarmine. After unloading, parking will be in the Murphy Garage or Broadway Garage.

CAMPION HALL

914 E. Jefferson Street, Seattle, WA 98122
Desk Telephone: (206) 296-5600

Campion is located between East Jefferson Street and East James Street on the south side of campus. The main entrance is on the north side of Campion Tower and just past the 11th & E. Cherry garage.

MURPHY APARTMENTS

1001 East James Way, Seattle, WA 98122
Desk Telephone: (206) 398-4984

Murphy is located on Cherry street in between Broadway and 12th Avenue.

CAMPION AND MURPHY MOVE-IN DAY

Turn into the Murphy Garage entrance off E. Cherry Street. Unload at the top of the turnaround. After unloading, parking will be in the lower floors of Murphy Garage.

CHARDIN HALL

1020 E. Jefferson Street, Seattle, WA 98122
Desk Telephone: (206) 398-4500

Chardin Hall is located on East Jefferson Street on the south side of campus. The main entrance to the parking lot is on Jefferson Street.

THE COMMONS/SOUTH LAKE UNION

2025 Terry Ave, Seattle, WA 98121
Desk Telephone: (206) 315-5852

The Commons is located on the corner of Terry and Lenora.

THE COMMONS MOVE-IN DAY

Residents arriving by vehicle should enter the alley behind the building from Virginia Street and proceed to the designated unloading area. Residents arriving without a vehicle or without needing unloading space may enter The Commons through the main entrance on the first floor.



WELCOME!

XAVIER HALL

1110 East Spring Street Seattle, WA 98122
Desk Telephone: (206) 296-6320

Xavier Hall is located between Madison and Marion Streets

XAVIER MOVE-IN DAY

Turn into E. Spring off 12th Avenue There will be Public Safety Officers to direct you to Xavier. After unloading, parking will be in the Main parking lot.

YOB

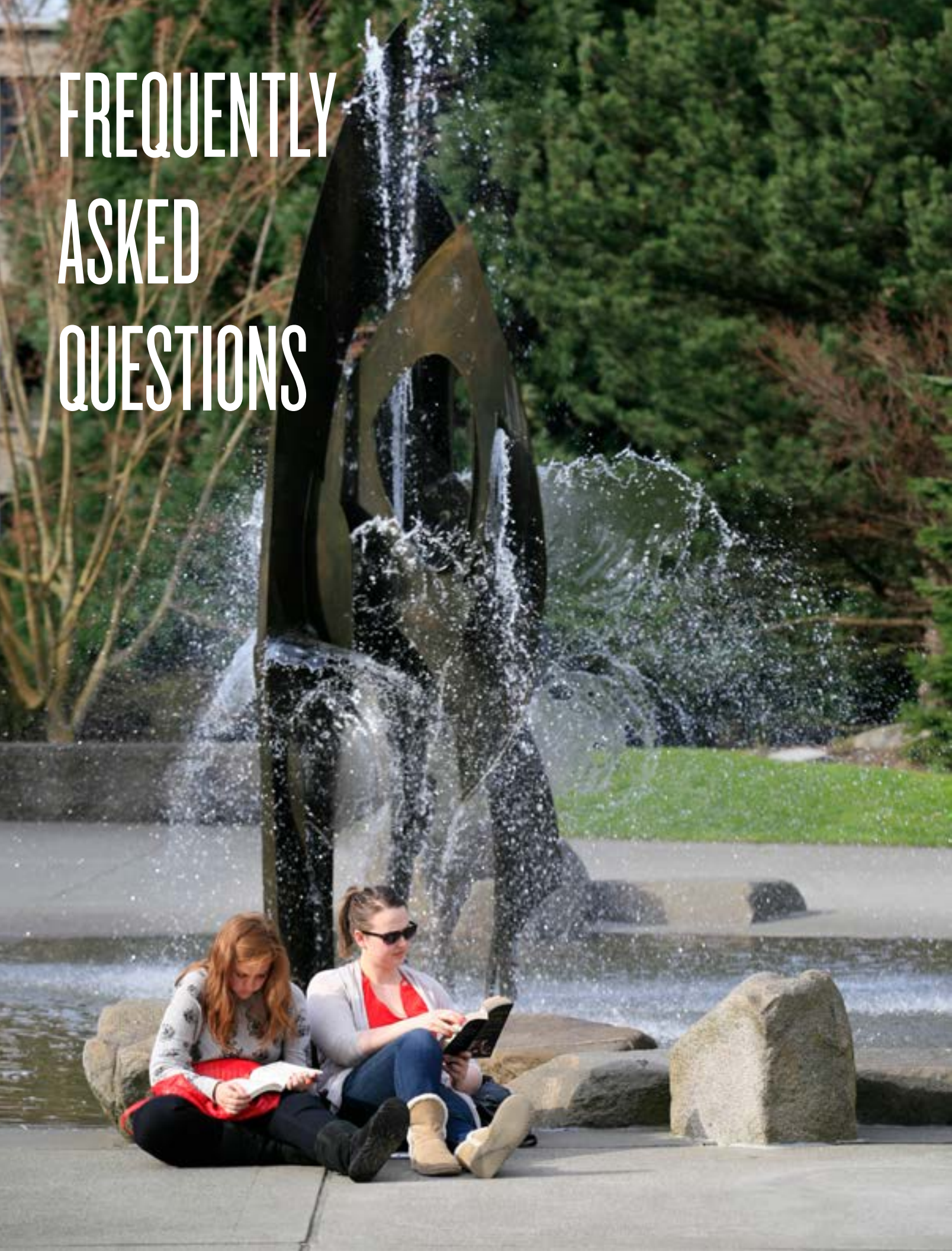
1219 E. Marion Street Seattle, WA 98122
Desk Telephone: (206) 296-6320 (Xavier)

Turn into E. Marion off 12th Avenue. Unload and then park in the Pigott parking lot. For packages that you wish to be held at a front desk, please mail them to the Xavier address.

"Living in Campion as a first-year student allowed me to make many connections with peers and make many memories I do not regret!"

TIFFANY TAKIGUCHI
Major: Nursing

FREQUENTLY ASKED QUESTIONS



MAY I MAIL MY BELONGINGS TO CAMPUS EARLY?

Yes, however, we have limited storage space, so please mail packages no earlier than 10 days prior to your arrival. Your belongings will be waiting for you at the front desk of your residential community.

ARE MICRO-FRIDGES OR KITCHENS AVAILABLE?

Bellarmino, Campion, Chardin, The Commons, and Xavier have microfridges in each room. There are community kitchens in each residential community. Campion Hall has kitchens on every floor. All apartments units and some rooms in The Commons have kitchens.

HOW DO I CHANGE MY MEAL PLAN?

In compliance with the on-campus housing requirement, first- and second-year students living on campus are required to have a minimum of the Residential Meal Plan. Students may request to change their meal plan by filling out the Meal Plan Change Request form through the Housing Portal on our website within the first 10 business days of the term. A supplemental meal plan allows additional money to be added to the account.

WHAT IF I NEED SOMETHING FIXED IN MY ROOM?

Students submit work requests online to report any issues in their room and to request that their beds be bunked, raised, or un-bunked. This can be done online through the Work Order portal found on our website.

I UNDERSTAND THAT ALL FIRST AND SECOND YEAR STUDENTS ARE REQUIRED TO LIVE ON CAMPUS BUT I WANT TO COMMUTE FROM HOME.

As a residential campus, we recognize the value of living on campus in enhancing students' education and fostering personal development. Therefore, students may only live at home due to exceptional circumstances. Please review the Housing Requirement policy: www.seattleu.edu/life-at-seattle-u/housing-dining/housing-policies/housing-requirement/

WHEN DO I GET MY ROOM ASSIGNMENT?

Room assignments will be available on the Housing Portal on July 7 for CCASU/South Lake Union students and July 29 for First Hill students. Transfer students will receive their room assignment on a rolling basis after submitting their housing application.

CAN I BRING A CAR? A BIKE? WHAT ARE THE PUBLIC TRANSPORTATION OPTIONS?

Transportation and Parking offer options for students traveling to campus. Orca passes (Seattle's transit system) are available at a reduced fee for students, and there are several transit stops near the campus. To park on the First Hill campus, first-year students must complete the "First Year Resident Parking Waiver Application" and purchase the corresponding parking pass for the quarter. Students are welcome to bring their bikes, and we offer both outdoor

and covered bike racks. South Lake Union students are centrally located within Seattle's transportation network; however, parking in the area is extremely limited.

I WANT TO LIVE WITH A FRIEND OR A PREFERRED ROOMMATE.

Is your friend also an incoming student? If so, you will have the opportunity to select them as your roommate starting May 13 through the Roommate Search process. More information will be sent out closer to the date.

I DON'T KNOW ANYONE AND AM WORRIED I WILL NOT FIND A ROOMMATE.

No problem! We will match you with a roommate based on answers to your profile questions in the housing application. On the other hand, if you would like to make yourself searchable through the Roommate Search process, indicate that you want your profile to be searchable in the "Profile Searching" section. If this option is not selected, you can return to your application to select it. The optional roommate search will open on May 12 at 12 p.m. PDT.

THE PERSON I WANT TO ROOM WITH CAN'T FIND ME ON THE PORTAL

If you are searching before May 12, please note that the search option will open on May 12. Have you AND your friend made yourselves searchable on the application? If not, neither of you will be able to find each other. Go back into the housing application and select "Yes" for Profile Searching in the Profile Question section.

WHAT HAPPENS IF I DON'T GET ALONG WITH MY ROOMMATE(S)?

We encourage roommates to communicate over the summer about their sleep habits, study habits, favorite bands, and other shared interests. We spend considerable time matching roommates based on their responses to the housing form. During the first week, roommates will sign a roommate agreement outlining their agreed-upon expectations for their living situation. Learning to live with someone is a crucial life skill, and we provide support to residents from both student staff and professional staff to help them navigate this challenge. Resident Assistants are there to help mediate conflicts, and students should contact their RA first with any issues that arise. Our RA staff will refer students to our professional staff if necessary to come to a solution, which may include a room change.

I WANT MY OWN ROOM.

First-year students will be placed in a shared room. If you are requesting a single space as a medical accommodation, please note this on your housing application in the "Additional Information" section and contact Disability Services to talk about your specific accommodation request. We work closely with Disability Services to meet your housing needs. Please submit all requests to Disability Services by July 1, 2026.



IMPORTANT RESOURCES

COUNSELING AND PSYCHOLOGICAL SERVICES (CAPS)

www.seattleu.edu/life-at-seattle-u/health-wellness/caps/
First Hill, Pavilion
206-296-6090, caps@seattleu.edu

DISABILITY SERVICES

www.seattleu.edu/disability-services/
First Hill, Loyola; ; SLU, The Commons
206-296-5740, ds@seattleu.edu

INTERNATIONAL STUDENT AND SCHOLAR CENTER

www.seattleu.edu/isc/
Pavilion, Room 160
206-296-6260, ISC@seattleu.edu

LEARNING ASSISTANCE PROGRAMS

www.seattleu.edu/learning-assistance/
First Hill Lemieux Library
206-398-4450, learningassistance@seattleu.edu

THE MOSAIC CENTER

www.seattleu.edu/mosaic-center/
First Hill Pavilion
206-296-6070, mosaic@seattleu.edu

ORIENTATION PROGRAMS

www.seattleu.edu/admitted-students/orientation/
First Hill Student Center
206-296-2525, orientation@seattleu.edu

TRANSPORTATION AND PARKING SERVICES

www.seattleu.edu/transportation-and-parking-services/
First Hill Pavilion
206-296-5992, parkingservices@seattleu.edu

CAMPUS PUBLIC SAFETY

www.seattleu.edu/life-at-seattle-u/safety/
First Hill Columbia Building
Business Line: 206-296-5992
24-hour Non-Emergency Line: 206-296-5990
24-hour Emergency Line: 206-296-5911

STUDENT HEALTH CENTER

www.seattleu.edu/life-at-seattle-u/health-wellness/student-health-center/
First Hill Bellarmine Hall
206-296-6300, studenthealthcenter@seattleu.edu

SLU CAMPUS SERVICES

MCC First Floor
SLUcampusservices@seattleu.edu

SLU STUDENT & CAMPUS LIFE

Cornish Commons First Floor
Cornishstudentlife@seattleu.edu

UNIVERSITY ADVISING

Academic advising provides students with a personalized approach to planning their courses, mapping out their degree plan, and accessing resources to support their academic success. Your academic advisor is available to answer questions and help you get the most out of your education at Seattle University. www.seattleu.edu/academics/academic-advising/. To contact your advising center, please see below.

UNIVERSITY ADVISING

www.seattleu.edu/academics/academic-advising/
First Hill, Bellarmine Hall; SLU Main Campus Center
advisingservices@seattleu.edu or 206-296-2260

COLLEGE OF ARTS & SCIENCES

<https://www.seattleu.edu/arts-sciences/arts-and-sciences-advising-center/>
ASCAdvising@seattleu.edu or 206-296-2840

COLLEGE OF SCIENCE & ENGINEERING

<https://www.seattleu.edu/science-engineering/advising-center/>
se-adv@seattleu.edu or 206-296-2500

CORNISH COLLEGE OF THE ARTS

<https://www.seattleu.edu/academics/academic-advising/cornish-arts-advising/cornish-arts-current-students/advisingservices@seattleu.edu> or 206-296-2260

ALBERS SCHOOL OF BUSINESS AND ECONOMICS

<https://www.seattleu.edu/business/undergraduate/advising/>
AlbersUG-advising@seattleu.edu or 206-296-5700

COLLEGE OF NURSING AND HEALTH SCIENCES

<https://www.seattleu.edu/nursing/>
CONadvising@seattleu.edu or 206-296-5660

"On-campus housing gave me the perfect balance of independence and community. I enjoyed my own personal space while still being surrounded by my friends, teammates, and campus life."

JAKOB BALKOVEC



2026-2027 IMPORTANT DATES

DATES	EVENT
Wednesday, April 1	Orientation and Housing Portals Go Live
Tuesday, May 12	Roommate Searching Opens on the Housing Portal
Monday, June 1	Priority Deadline for New Student Housing Applications and Exceptions
Tuesday, June 23	Roommate searching closes at 11:59 PM for South Lake Union Students .
Tuesday, July 7	Room Assignments and Move-in appointments will be available on the Housing Portal by 4 p.m. for South Lake Union Students .
Tuesday, July 14	Roommate searching closes at 11:59 p.m. PT for First Hill Students
Tuesday, July 28	Room Assignments are available on the Housing Portal at 4 p.m. PT for First Hill Students
Tuesday, August 4	Move-in appointments and schedules are available on the Housing Portal at 12 p.m. PT for First Hill Students
Thursday, September 3	Move-in for South Lake Union Students at The Commons
Thursday, September 3 - 11	Fall Welcome for South Lake Union
Tuesday, September 8	Classes Begin for South Lake Union
Saturday, September 19	Move-in for First Hill Students
Saturday, September 19 - Saturday, September 26	Fall Welcome for First Hill
Wednesday, September 23	Classes Begin for First Hill
Saturday, December 12	End of Residence Halls Close at Noon for First Hill and South Lake Union Students
Saturday, January 2	Halls Re-Open for Winter Quarter Occupancy at 10 a.m. for First Hill Campus
Tuesday, January 5	Winter Classes Begin for First Hill Campus
Saturday, January 16	Halls Re-Open for Spring Semester Occupancy at 10 a.m. for South Lake Union Campus
Tuesday, January 19	Classes Begin for South Lake Union
Wednesday, March 31	Spring Classes Begin for First Hill
Friday, May 7	Halls Close at Noon for Spring Semester at South Lake Union/Move Out
Saturday, June 12	Halls Close at Noon for Spring Quarter at First Hill/Move Out

For the full academic calendar for **First Hill** go to: <https://www.seattleu.edu/academics/academic-calendar/>

For the full academic calendar for **South Lake Union** go to: <https://www.cornish.edu/records-and-registration/academic-calendar/>

Housing & Residence Life
 901 12th Avenue PO Box 222000, Seattle, WA 98122-1090
 Phone 206-296-6305 Fax 206-296-2212
housing@seattleu.edu
www.seattleu.edu/



Seattle University does not discriminate on the basis of race, color, religion, sex, national origin, age, disability, marital status, sexual orientation, gender identity, political ideology or status as a Vietnam-era or special disabled veteran in the administration of any of its education policies, admission policies, scholarship and loan programs, athletics, and other school-administered policies and programs, or in its employment related policies and practices. In addition, the University does not discriminate on the basis of genetic information or status as a victim of domestic violence, sexual assault, or stalking in its employment related policies and practices, including coverage under its health benefits program.

All University policies, practices and procedures are administered in a manner consistent with Seattle University's Catholic and Jesuit identity and character. Inquiries relating to these policies may be referred to the University's Assistant Vice President for Institutional Equity/Title IX Coordinator at 206-220-8515 or etrayner@seattleu.edu.