

Student Financial Services Winter Quarter Newsletter

By Seattle University • Dec 22, 2025

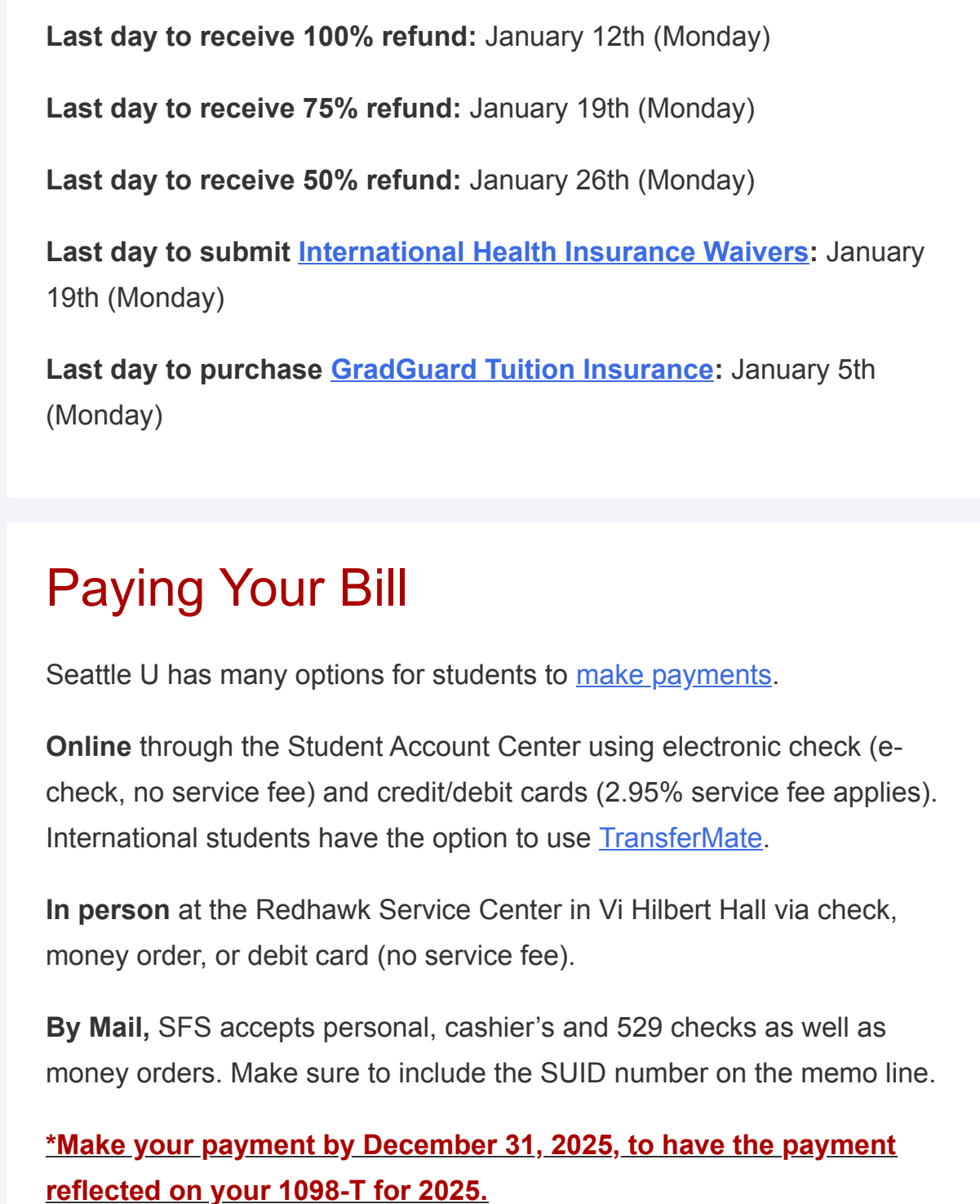
Smart Brevity® count: 5 mins...1374 words

This message is being sent to students and their designated proxies.

The SFS Quarterly Newsletter contains important financial aid and student account related information to equip you with the knowledge and tools you need for smooth sailing throughout your time at Seattle University.

In this edition: Winter Quarter Important Dates, How to Pay, 26-27 FAFSA/WASFA, SFS Counselor Spotlight, Satisfactory Academic Progress, Refund Processing, 1098-T Tax Information, Third-Party Access, Contact Info Updates, Scholarship Tips.

Winter Quarter Important Dates



Financial Aid Disbursement Date: December 29th (Monday)

Tuition Due Date: December 20th (Saturday)

Classes begin: January 6th (Tuesday)

[Credit Balance Refund](#) Processing begins: January 6th (Tuesday)

[Tuition Refund Periods:](#)

Last day to receive 100% refund: January 12th (Monday)

Last day to receive 75% refund: January 19th (Monday)

Last day to receive 50% refund: January 26th (Monday)

Last day to submit [International Health Insurance Waivers](#): January 19th (Monday)

Last day to purchase [GradGuard Tuition Insurance](#): January 5th (Monday)

Paying Your Bill

Seattle U has many options for students to [make payments](#).

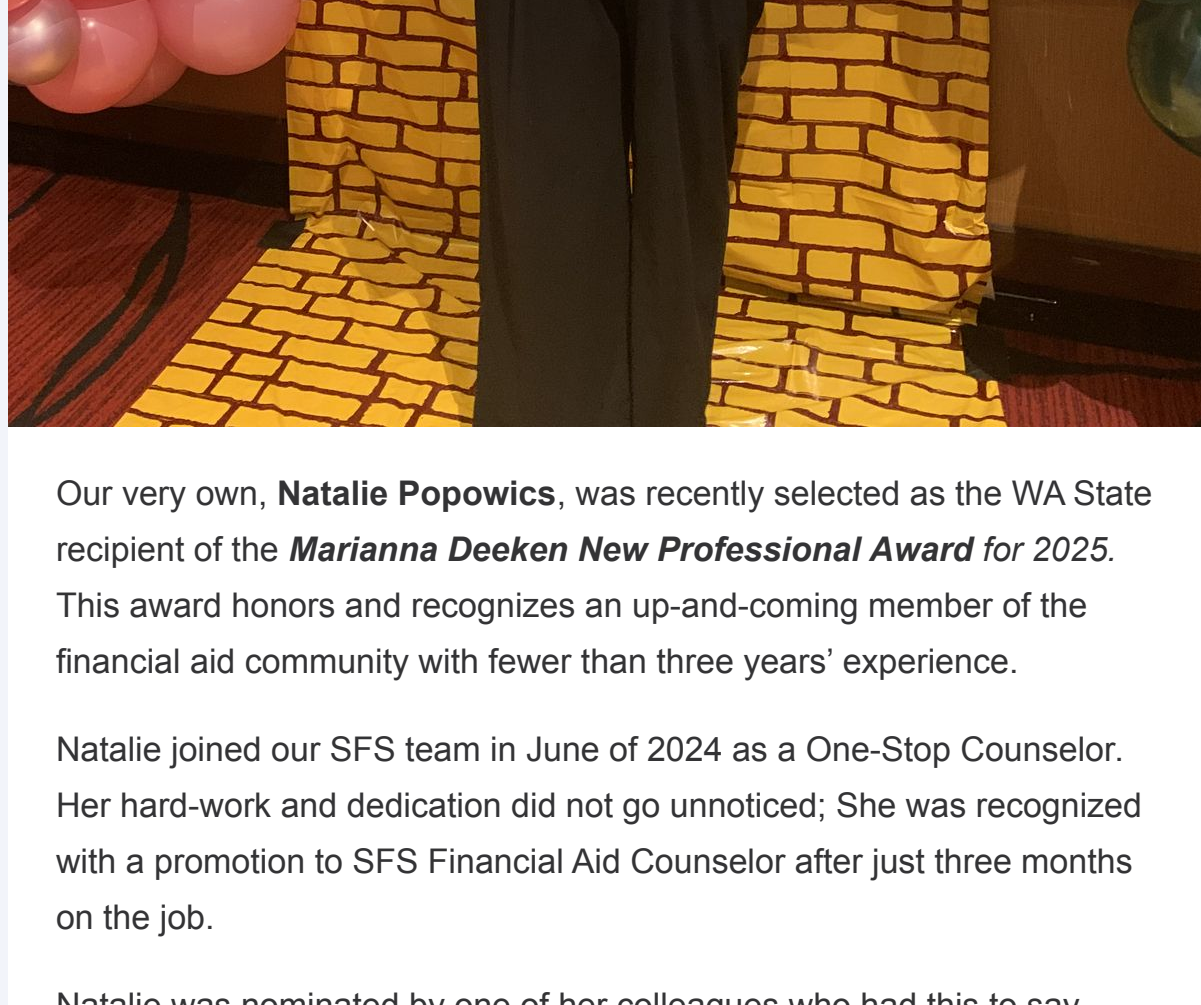
Online through the Student Account Center using electronic check (e-check, no service fee) and credit/debit cards (2.95% service fee applies). International students have the option to use [TransferMate](#).

In person at the Redhawk Service Center in Vi Hilbert Hall via check, money order, or debit card (no service fee).

By Mail, SFS accepts personal, cashier's and 529 checks as well as money orders. Make sure to include the SUID number on the memo line.

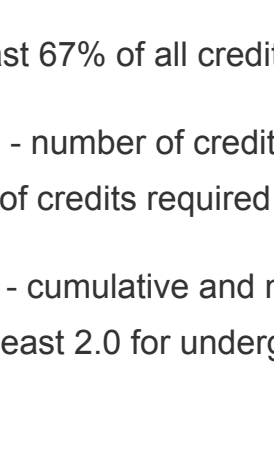
***Make your payment by December 31, 2025, to have the payment reflected on your 1098-T for 2025.**

File Your 26-27 FAFSA/WASFA Now!



The 2026-27 Free Application for Federal Student Aid (FAFSA) form is available now! All [eligible](#) undergraduate and graduate students are encouraged to [complete a FAFSA](#) every year. To have priority consideration for financial aid, submit the 26-27 FAFSA by **February 1**.

The FAFSA determines eligibility for need-based aid and federal loans. Generally, with some exceptions, unmarried undergraduate students are required to include parental information if they are less than 24 years old. It generally takes three to five business days for Seattle U to receive a new FAFSA application. Once received, students will receive an email notification if additional requirements need to be completed.



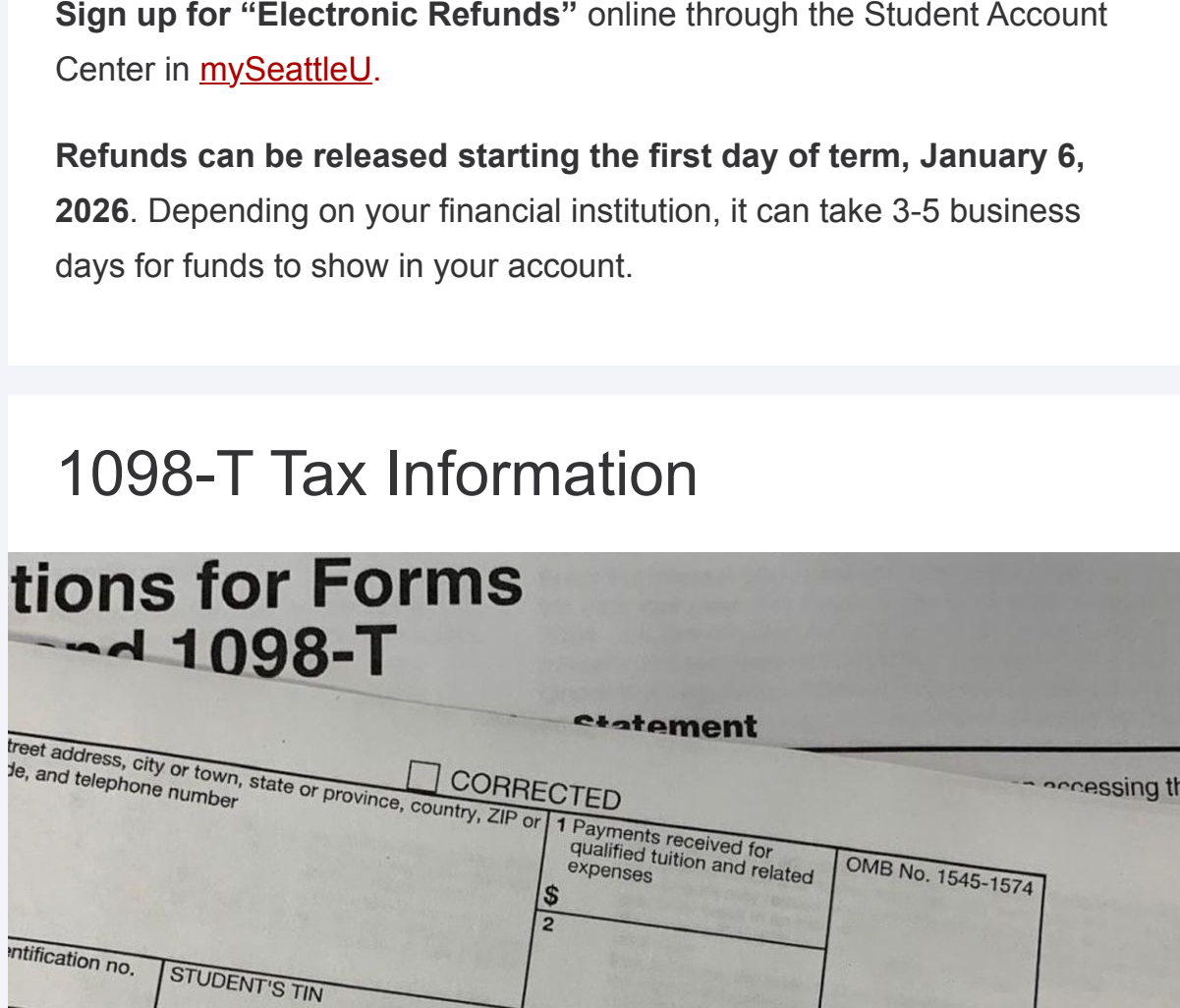
The 2026-27 [Washington Application for State Financial Aid \(WASFA\)](#) is also available now for students who are not eligible for or choose not to file the FAFSA form.

Students who have completed a FAFSA form will be considered for institutional, federal, and state financial aid and do not need to complete the WASFA separately.

Students who file the WASFA can only be considered for institutional and state aid. If you are [eligible for federal aid](#), completing the FAFSA could maximize your potential financial aid awards.

If you file the 26-27 WASFA, please reach out to SFS to let us know.

SFS Counselor Spotlight



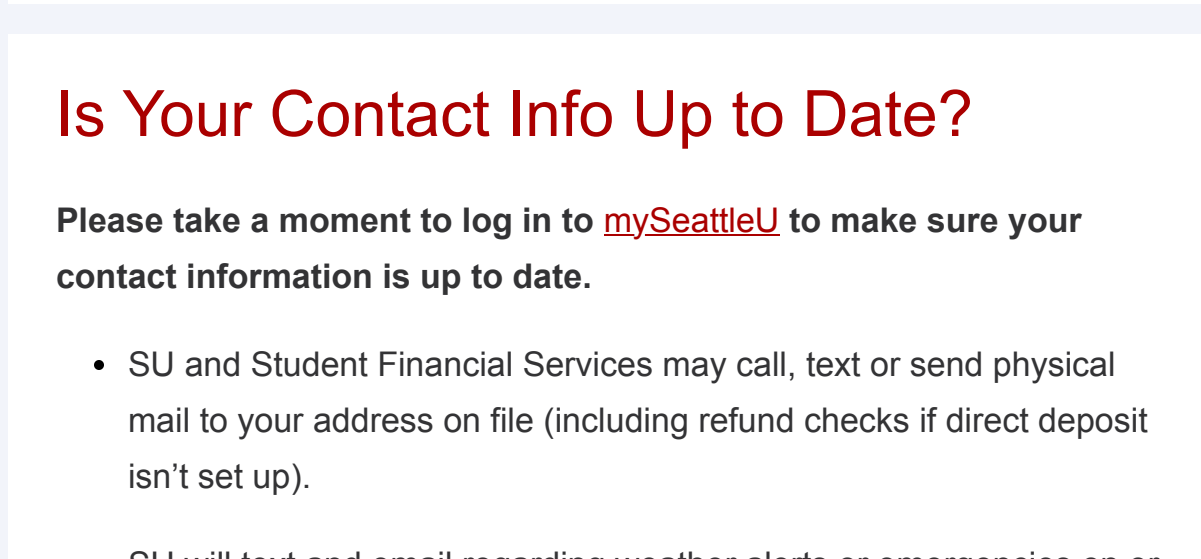
Our very own, **Natalie Popowics**, was recently selected as the WA State recipient of the *Marianna Deeken New Professional Award* for 2025. This award honors and recognizes an up-and-coming member of the financial aid community with fewer than three years' experience.

Natalie joined our SFS team in June of 2024 as a One-Stop Counselor. Her hard-work and dedication did not go unnoticed; She was recognized with a promotion to SFS Financial Aid Counselor after just three months on the job.

Natalie was nominated by one of her colleagues who had this to say, "Natalie delivers top-notch service that goes above and beyond while maintaining a friendly, positive attitude. Her care and compassion really shine in her day-to-day interactions with our students, their families and also with her fellow colleagues."

Natalie traveled to Tacoma, WA to attend the 2025 Washington Financial Aid Association (WFAA) Conference where she received her award.

SAP Probation Notices



To continue to be eligible to receive financial aid, students must maintain Satisfactory Academic Progress (SAP). Students were reviewed at the end of the Spring Quarter and notified if their aid eligibility was suspended due to not meeting the minimum SAP criteria:

1. **Pace** - complete at least 67% of all credits attempted
2. **Maximum Timeframe** - number of credits does not exceed 150% of the published number of credits required to earn degree
3. **Grade Point Average** - cumulative and major (after 15 credits completed) GPA of at least 2.0 for undergraduate students and 3.0 for graduate students

Students who have successfully appealed and had their Fall Quarter financial aid reinstated on a probationary basis will receive notification of their continued or discontinued financial aid eligibility for the Winter Quarter after Fall Quarter grades post on December 17.

Students who have not yet appealed and would like to do so should reach out to the Student Financial Services office right away.

The full [Satisfactory Academic Progress \(SAP\) Policy](#) can be reviewed for more detailed information.

Refund Processing

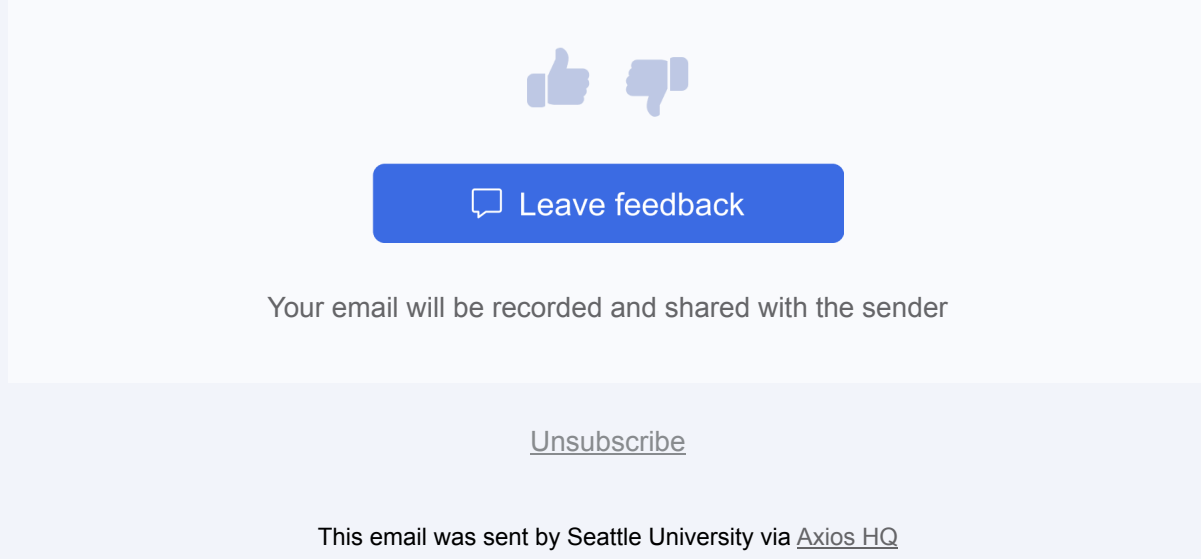


Electronic refunds via direct deposit are the fastest and safest way to receive your refund.

Sign up for "Electronic Refunds" online through the Student Account Center in [mySeattleU](#).

Refunds can be released starting the first day of term, January 6, 2026. Depending on your financial institution, it can take 3-5 business days for funds to show in your account.

1098-T Tax Information



What is a 1098-T form?

- This form provides information about educational expenses that may qualify the student—or the student's parents or guardian, if the student is a dependent—for [education related tax credits](#).
- SFS provides 1098-T tax forms for the previous calendar year on, or before, January 31st
- International students need an SSN/ITIN associated with their profile. Check your profile in mySeattleU and if needed, submit the [Student Update Notification Form](#) to add your SSN/ITIN.
- Students and their Authorized Users can access their 1098-T online in the Student Account Center.

Winter Quarter tuition payments received by December 31st, 2025 will be reflected on the 1098-T tax form for 2025.

Third-Party Access

Federal regulations ([FERPA](#)) guarantee a student's right to privacy when it comes to his or her educational records, which includes academic and financial components. However, students at Seattle University can choose to allow a [third-party access](#) to portions of their record as described below.

There are **two steps** that students must take if they want to provide family members or supporters the ability to speak to SFS about the student's account and to see financial information online:

Proxy authorization provides viewing access to the student's financial aid offer letters and allows for SFS to answer questions about the financial aid or the student account.

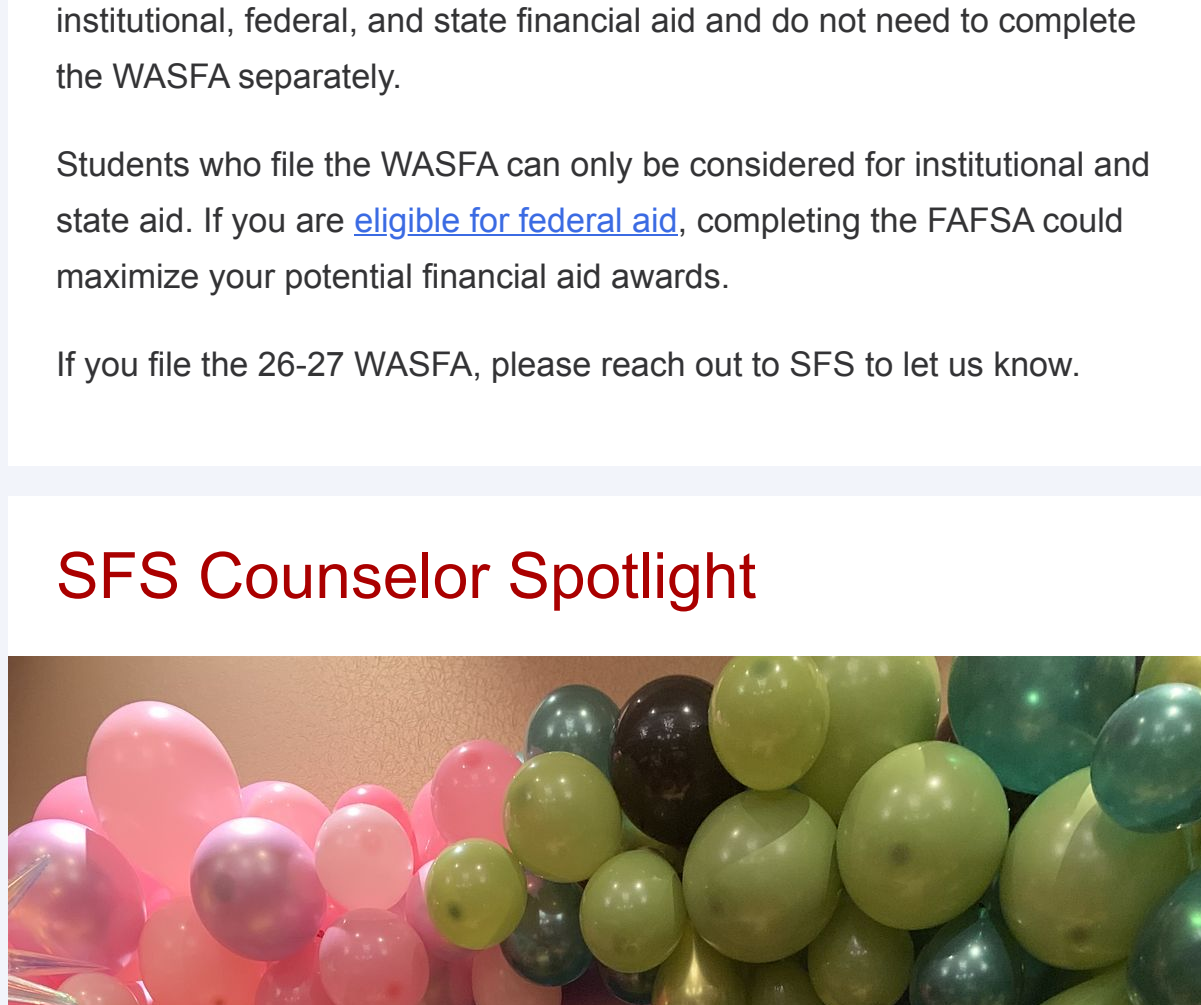
Authorized User provides access to the Student Account Center where billing statements and tax information can be viewed, online payments can be made, and payment plans can be set up.

Is Your Contact Info Up to Date?

Please take a moment to log in to [mySeattleU](#) to make sure your contact information is up to date.

- SU and Student Financial Services may call, text or send physical mail to your address on file (including refund checks if direct deposit isn't set up).
- SU will text and email regarding weather alerts or emergencies on or near campus. This is especially important if you now have a Seattle area address and/or phone #.
- For more information on how to make updates visit the [Redhawk Hub](#)

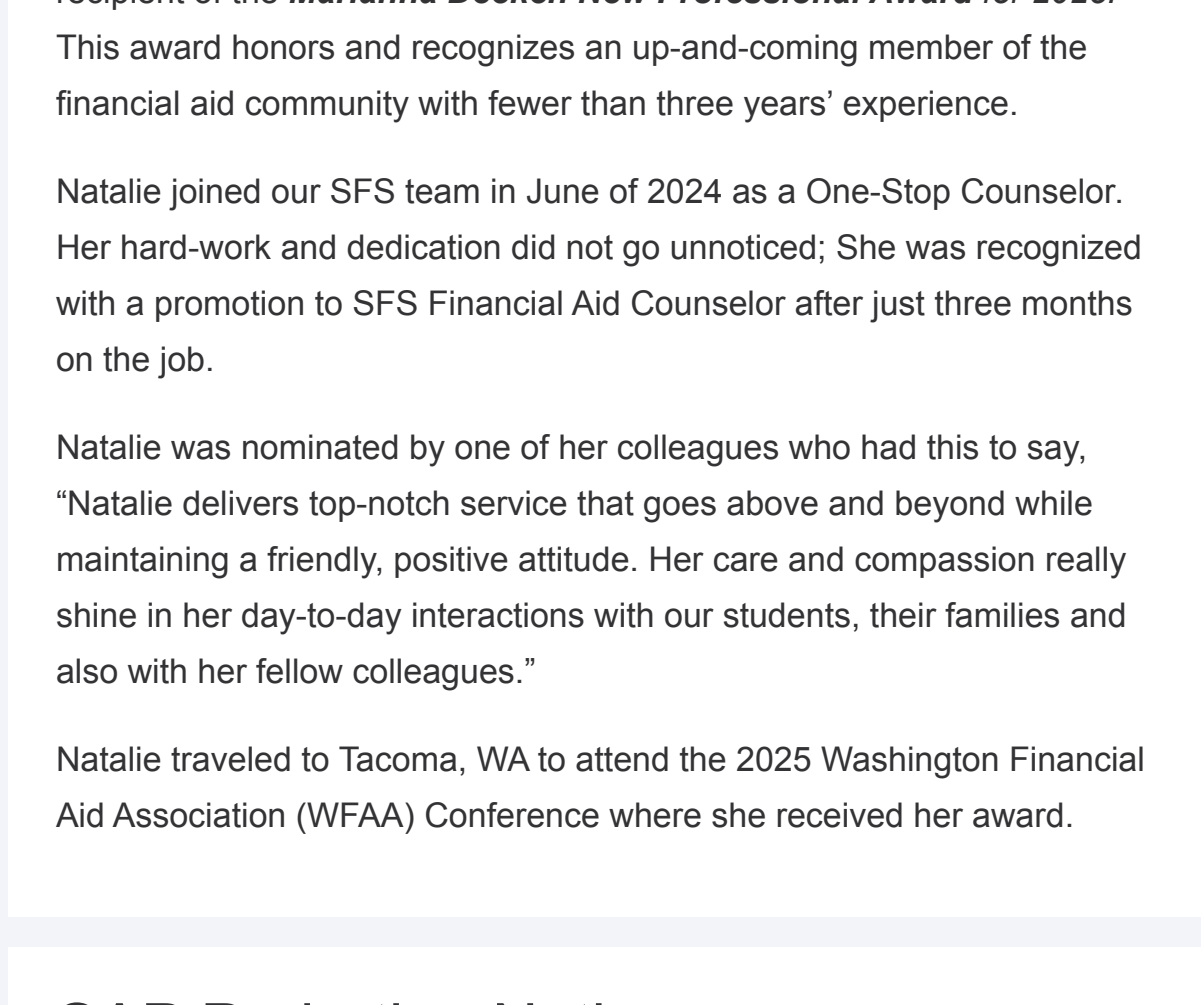
ICW Scholarship Opportunities



Independent Colleges of Washington (ICW) have opened their competitive scholarship season. Scholarships are open to all students attending ICW member institutions and specific eligibility requirements are listed in this [scholarship checklist](#).

All scholarship applications can be found at [ICW's scholarship webpage](#). **Applications are due April 17, 2026.**

Scholarship Tips



- Start applying early
- "Scholarship Season" (when most scholarship applications are open) is from November - April
- Don't rule out smaller/local scholarships - these often have a smaller applicant pool and increase your chances of being selected
- Never pay money or fees to apply for or receive a scholarship
- Reach out to someone you trust and/or SFS if you question if a scholarship is authentic
- Cast a wide net - apply for as many scholarships as you can from as many places as possible
- Use [ScholarshipUniverse](#) to apply for scholarships you may qualify to receive!

Quick Links

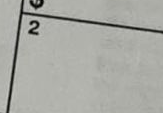
[SFS on the SU Website](#)

[Forms and Documents](#)

[Student Account Center - Student Access](#)

[Student Account Center - Authorized User Access](#)

Was this edition useful?



🗨️ Leave feedback

Your email will be recorded and shared with the sender

[Unsubscribe](#)

This email was sent by Seattle University via [Axios HQ](#)