



## ResHall Wired Network Jacks

Bellarmino, Campion, Murphy Apts, Chardin, Xavier, Douglas

Information Technology Services, Data Network Operations

Updated 9/16/16

### Bellarmino (BELL)

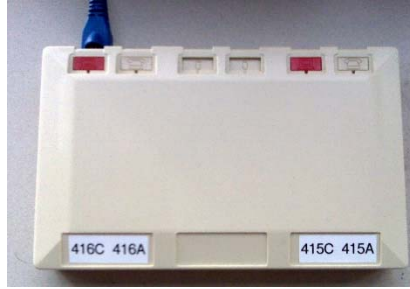
Connect devices to the 'B' jacks with the red computer icon.



Typical BELL faceplate

### Campion (CAMP, 1 of 2)

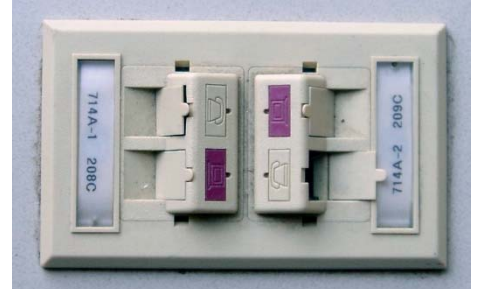
Connect devices to the 'C' jacks with the red computer icon.



Typical CAMP faceplate, style 1 of 2

### Campion (CAMP, 2 of 2)

Connect devices to the 'C' jacks with the red computer icon.



Typical CAMP faceplate, style 2 of 2

### Murphy Apts (ATM1-ATM5)

Connect devices to the bottom jacks where the label ends with 'D'.



Typical ATMA faceplate

### Chardin (CHDN)

Connect devices to jacks with the red computer icon.



Typical CHDN faceplate

### Xavier (XAVR)

Connect devices to the 'B' jacks with the red computer icon.



Typical XAVR faceplate

### Douglas (DOUG)

The network jacks are unlabeled. Connect devices to the pictured jack in either the bedroom or living room.



Typical DOUG faceplate