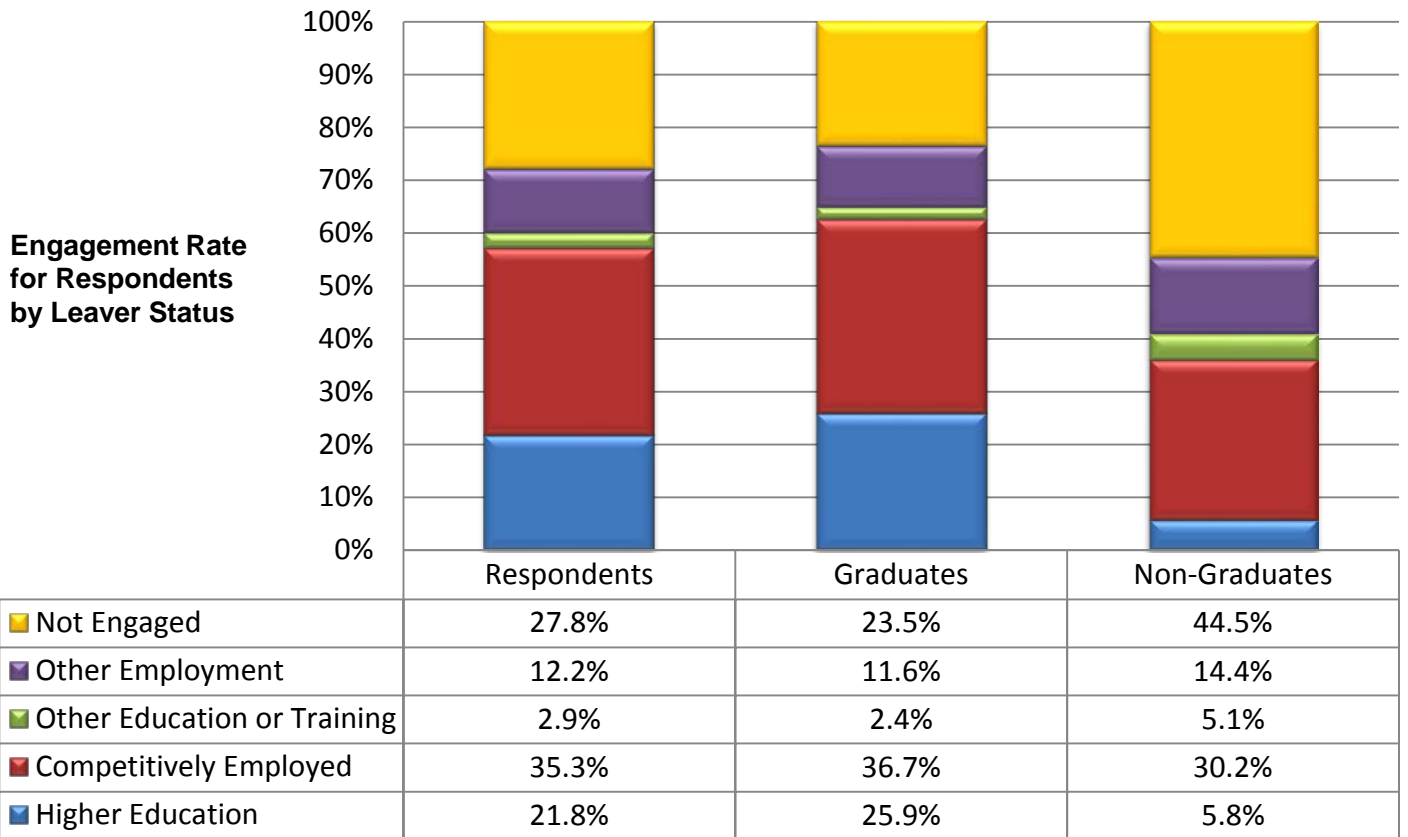


Washington State

2015-2016 Post-School Outcomes for Students with IEPs: Postsecondary Activities in the First Year after High School



These definitions are specific to the 2010 State Performance Plan for Individuals with Disabilities Education Improvement Act (IDEiA) Part B.

Leavers are youth with IEPs who left school by graduating with a diploma, aging out, leaving school early (i.e., dropping out), or who were expected to return and did not.

Graduates are youth with IEPs who graduated with a diploma.

Non-Graduates are youth with IEPs who aged out, received an adult high school diploma, left school early (i.e. dropped out), or who were expected to return and did not.

Respondents are young adult Leavers or their designated family member who answered the survey interview questions.

Higher Education (1) means Leavers have been enrolled on a full- or part-time basis in a community college (2-year program), or college/university (4- or more year program) for at least one complete term, at any time in the first year since leaving high school.

Competitive Employment (2) means Leavers have worked for pay at or above the minimum wage in a setting with others who are nondisabled for a period of 20 hours a week or more for at least 90 days at any time in the year since leaving high school. This includes military employment.

Some Other Education (3) means Leavers enrolled on a full- or part-time basis for at least one complete term at any time in the first year since leaving high school in an education or training program (e.g., Job Corps, adult education, workforce development program, or vocational technical school which is less than a 2-year program).

Some Other Employment (4) means Leavers have worked for pay or been self-employed for a period of at least 90 days at any time in the first year since leaving high school. This includes working in a family business (e.g., farm, store, fishing, ranching, catering services, etc.).

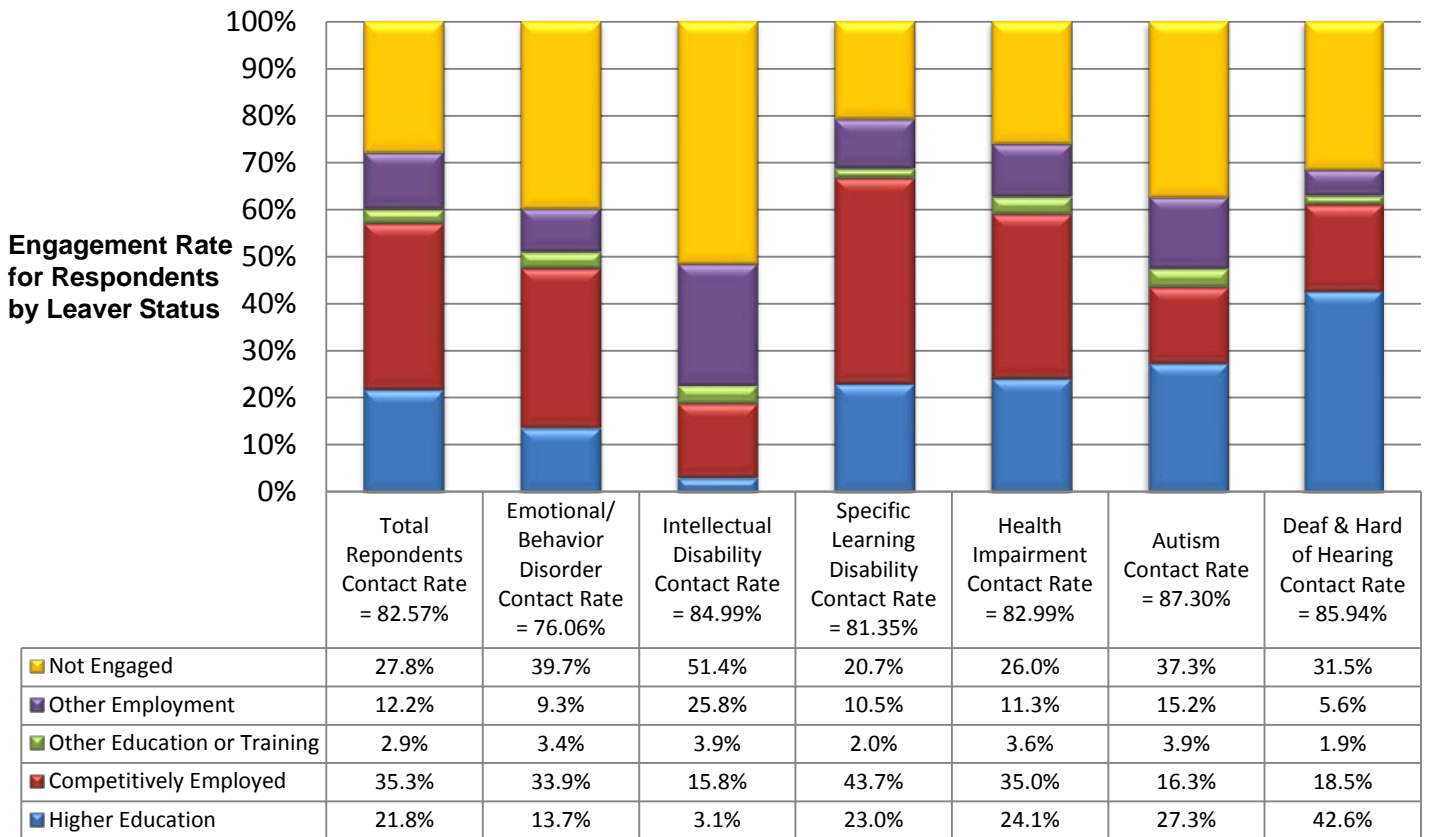
OSPI State-Needs Project: Center for Change in Transition Services

Email: ccts@seattleu.edu Website: www.seattleu.edu Phone: 206-296-6494 Fax: 206-296-2689

Seattle University 901 12th Ave, P.O. Box 222000 Seattle, WA 98122-1090

Washington State Disaggregated by Disability

2015-2016 Post-School Outcomes for Students with IEPs: Postsecondary Activities in the First Year after High School



These definitions are specific to the 2010 State Performance Plan for Individuals with Disabilities Education Improvement Act (IDEiA) Part B.

Leavers are youth with IEPs who left school by graduating with a diploma, aging out, leaving school early (i.e., dropping out), or who were expected to return and did not.

Graduates are youth with IEPs who graduated with a diploma.

Non-Graduates are youth with IEPs who aged out, received an adult high school diploma, left school early (i.e. dropped out), or who were expected to return and did not.

Respondents are young adult Leavers or their designated family member who answered the survey interview questions.

Higher Education (1) means Leavers have been enrolled on a full- or part-time basis in a community college (2-year program), or college/university (4- or more year program) for at least one complete term, at any time in the first year since leaving high school.

Competitive Employment (2) means Leavers have worked for pay at or above the minimum wage in a setting with others who are nondisabled for a period of 20 hours a week or more for at least 90 days at any time in the year since leaving high school. This includes military employment.

Some Other Education (3) means Leavers enrolled on a full- or part-time basis for at least one complete term at any time in the first year since leaving high school in an education or training program (e.g., Job Corps, adult education, workforce development program, or vocational technical school which is less than a 2-year program).

Some Other Employment (4) means Leavers have worked for pay or been self-employed for a period of at least 90 days at any time in the first year since leaving high school. This includes working in a family business (e.g., farm, store, fishing, ranching, catering services, etc.).

OSPI State-Needs Project: Center for Change in Transition Services

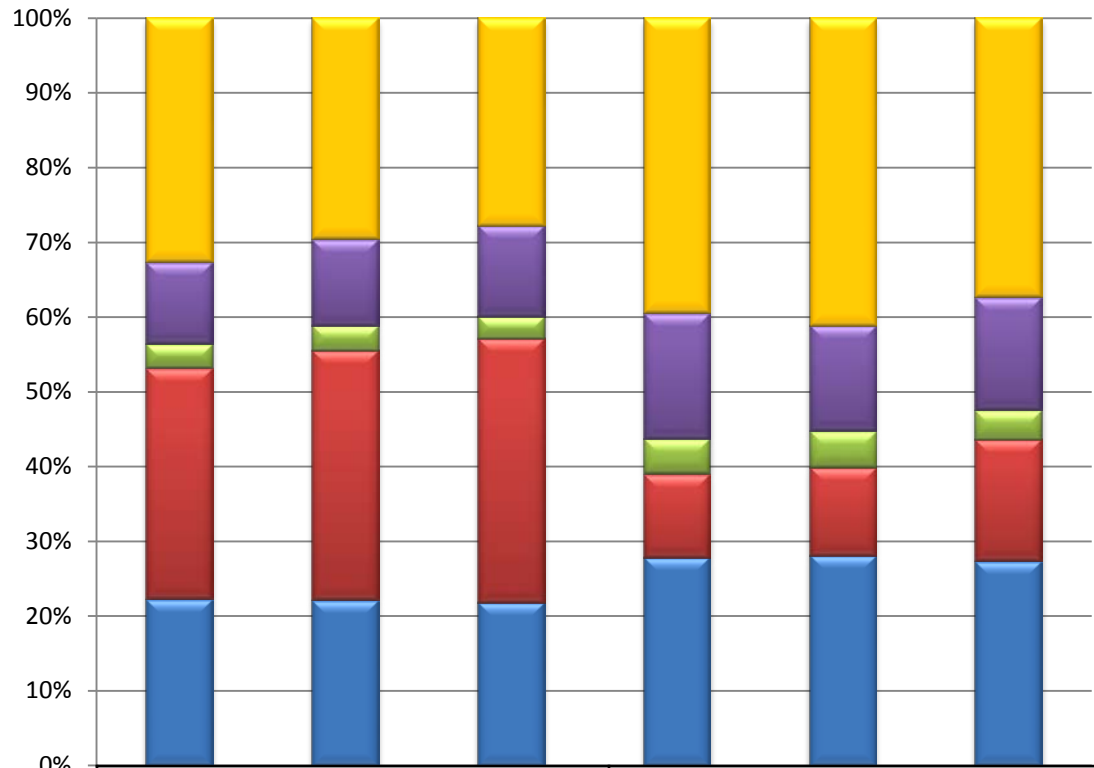
Email: ccts@seattleu.edu Website: www.seattleu.edu Phone: 206-296-6494 Fax: 206-296-2689

Seattle University 901 12th Ave, P.O. Box 222000 Seattle, WA 98122-1090

Washington State: Three Year Overview

2013-2016 Post-School Outcomes for Students with Autism: Postsecondary Activities in the First Year after High School

**Engagement Rate
for Respondents
by Leaver Status**



	Total Respondents			Respondents with Autism		
	2013-2014	2014-2015	2015-2016	2013-2014	2014-2015	2015-2016
Not Engaged	32.6 %	29.5 %	27.8 %	39.4 %	41.1 %	37.3 %
Other Employment	11.0 %	11.6 %	12.2 %	16.8 %	14.2 %	15.2 %
Other Education or Training	3.2 %	3.3 %	2.9 %	4.8 %	4.9 %	3.9 %
Competitively Employed	30.9 %	33.4 %	35.3 %	11.1 %	11.8 %	16.3 %
Higher Education	22.3 %	22.1 %	21.8 %	27.9 %	28.1 %	27.3 %

Higher Education (1): Leavers have been enrolled on a full- or part-time basis in a community college (2-year program), or college/university (4- or more year program) for at least one complete term, at any time in the first year since leaving high school.

Competitive Employment (2): Leavers have worked for pay at or above the minimum wage in a setting with others who are nondisabled for a period of 20 hours a week or more for at least 90 days at any time in the year since leaving high school. This includes military employment.

Some Other Education (3): Leavers enrolled on a full- or part-time basis for at least one complete term at any time in the first year since leaving high school in an education or training program (e.g., Job Corps, adult education, workforce development program, or vocational technical school which is less than a 2-year program).

Some Other Employment (4): Leavers have worked for pay or been self-employed for a period of at least 90 days at any time in the first year since leaving high school. This includes working in a family business (e.g., farm, store, fishing, ranching, catering services, etc.).

OSPI State-Needs Project: Center for Change in Transition Services

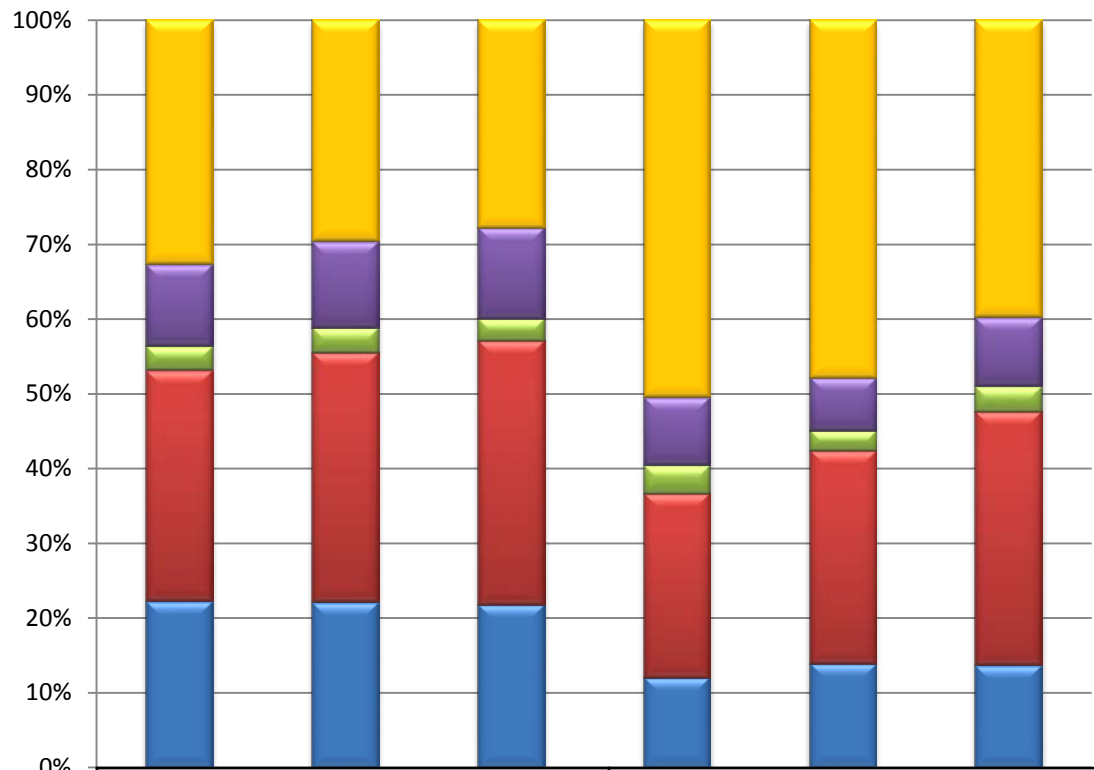
Email: ccts@seattleu.edu Website: www.seattleu.edu Phone: 206-296-6494 Fax: 206-296-2689

Seattle University 901 12th Ave, P.O. Box 222000 Seattle, WA 98122-1090

Washington State: Three Year Overview

2013-2016 Post-School Outcomes for Students with Emotional Behavior Disorders: Postsecondary Activities in the First Year after High School

Engagement Rate
for Respondents
by Leaver Status



	Total Respondents			Respondents with EBD		
	2013-2014	2014-2015	2015-2016	2013-2014	2014-2015	2015-2016
Not Engaged	32.6 %	29.5 %	27.8 %	50.4 %	47.8 %	39.7 %
Other Employment	11.0 %	11.6 %	12.2 %	9.1 %	7.1 %	9.3 %
Other Education or Training	3.2 %	3.3 %	2.9 %	3.9 %	2.7 %	3.4 %
Competitively Employed	30.9 %	33.4 %	35.3 %	24.6 %	28.5 %	33.9 %
Higher Education	22.3 %	22.1 %	21.8 %	12.1 %	13.9 %	13.7 %

Higher Education (1): Leavers have been enrolled on a full- or part-time basis in a community college (2-year program), or college/university (4- or more year program) for at least one complete term, at any time in the first year since leaving high school.

Competitive Employment (2): Leavers have worked for pay at or above the minimum wage in a setting with others who are nondisabled for a period of 20 hours a week or more for at least 90 days at any time in the year since leaving high school. This includes military employment.

Some Other Education (3): Leavers enrolled on a full- or part-time basis for at least one complete term at any time in the first year since leaving high school in an education or training program (e.g., Job Corps, adult education, workforce development program, or vocational technical school which is less than a 2-year program).

Some Other Employment (4): Leavers have worked for pay or been self-employed for a period of at least 90 days at any time in the first year since leaving high school. This includes working in a family business (e.g., farm, store, fishing, ranching, catering services, etc.).

OSPI State-Needs Project: Center for Change in Transition Services

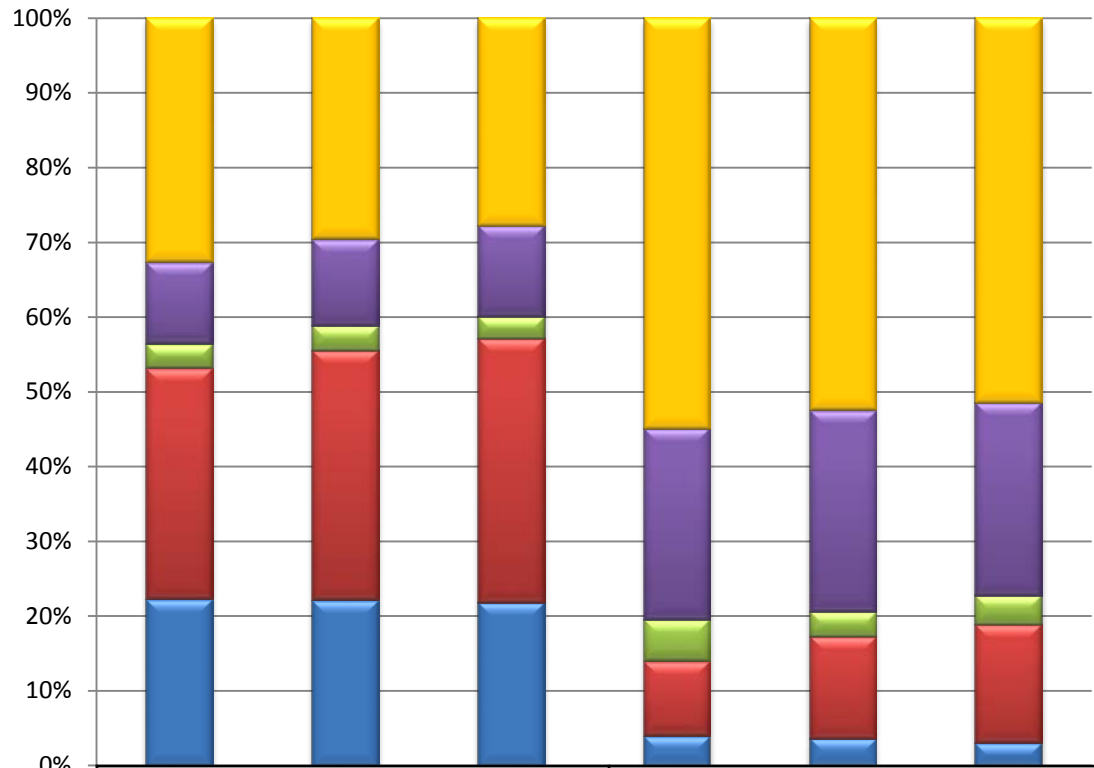
Email: ccts@seattleu.edu Website: www.seattleu.edu Phone: 206-296-6494 Fax: 206-296-2689

Seattle University 901 12th Ave, P.O. Box 222000 Seattle, WA 98122-1090

Washington State: Three Year Overview

2013-2016 Post-School Outcomes for Students with Intellectual Disabilities: Postsecondary Activities in the First Year after High School

**Engagement Rate
for Respondents
by Leaver Status**



Leaver Status	Total Respondents			Respondents with Intellectual Disabilities		
	2013-2014	2014-2015	2015-2016	2013-2014	2014-2015	2015-2016
Higher Education	22.3 %	22.1 %	21.8 %	4.0 %	3.6 %	3.1 %
Competitively Employed	30.9 %	33.4 %	35.3 %	10.1 %	13.6 %	15.8 %
Other Education or Training	3.2 %	3.3 %	2.9 %	5.5 %	3.3 %	3.9 %
Other Employment	11.0 %	11.6 %	12.2 %	25.6 %	27.0 %	25.8 %
Not Engaged	32.6 %	29.5 %	27.8 %	54.9 %	52.4 %	51.4 %

Higher Education (1): Leavers have been enrolled on a full- or part-time basis in a community college (2-year program), or college/university (4- or more year program) for at least one complete term, at any time in the first year since leaving high school.

Competitive Employment (2): Leavers have worked for pay at or above the minimum wage in a setting with others who are nondisabled for a period of 20 hours a week or more for at least 90 days at any time in the year since leaving high school. This includes military employment.

Some Other Education (3): Leavers enrolled on a full- or part-time basis for at least one complete term at any time in the first year since leaving high school in an education or training program (e.g., Job Corps, adult education, workforce development program, or vocational technical school which is less than a 2-year program).

Some Other Employment (4): Leavers have worked for pay or been self-employed for a period of at least 90 days at any time in the first year since leaving high school. This includes working in a family business (e.g., farm, store, fishing, ranching, catering services, etc.).

OSPI State-Needs Project: Center for Change in Transition Services

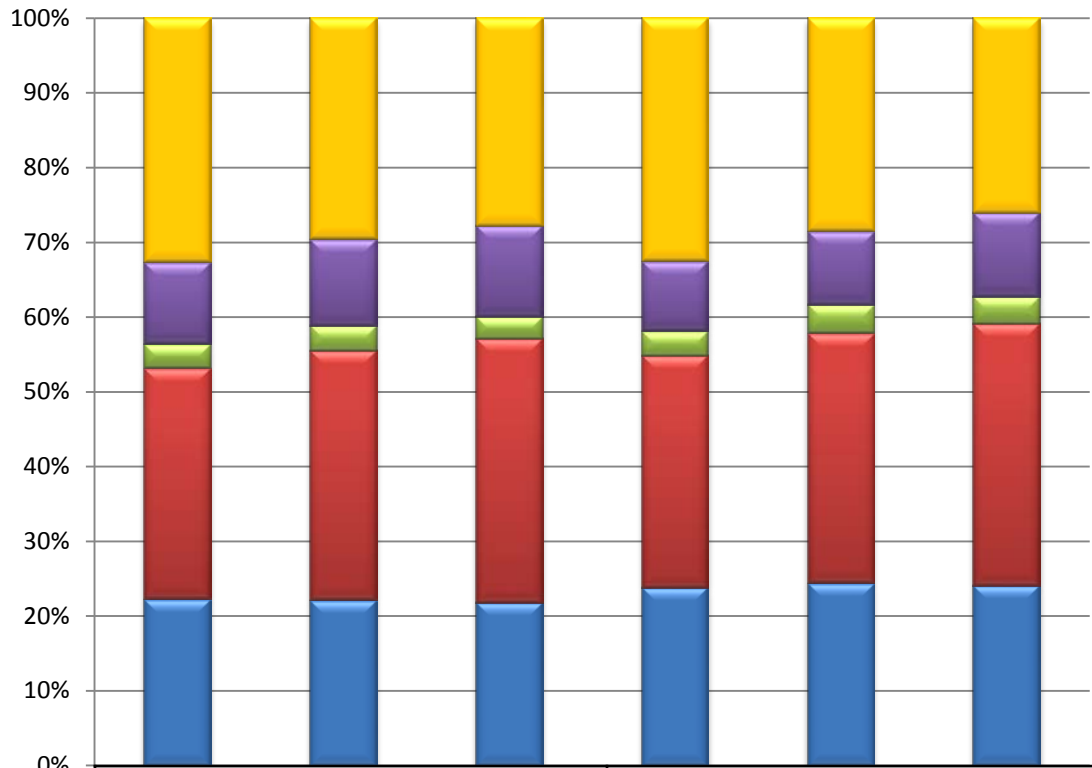
Email: ccts@seattleu.edu Website: www.seattleu.edu Phone: 206-296-6494 Fax: 206-296-2689

Seattle University 901 12th Ave, P.O. Box 222000 Seattle, WA 98122-1090

Washington State: Three Year Overview

2013-2016 Post-School Outcomes for Students with Health Impairments: Postsecondary Activities in the First Year after High School

Engagement Rate
for Respondents
by Leaver Status



	Total Respondents			Respondents with Health Impairments		
	2013-2014	2014-2015	2015-2016	2013-2014	2014-2015	2015-2016
Not Engaged	32.6 %	29.5 %	27.8 %	32.5 %	28.5 %	26.0 %
Other Employment	11.0 %	11.6 %	12.2 %	9.4 %	9.9 %	11.3 %
Other Education or Training	3.2 %	3.3 %	2.9 %	3.3 %	3.7 %	3.6 %
Competitively Employed	30.9 %	33.4 %	35.3 %	31.0 %	33.5 %	35.0 %
Higher Education	22.3 %	22.1 %	21.8 %	23.9 %	24.4 %	24.1 %

Higher Education (1): Leavers have been enrolled on a full- or part-time basis in a community college (2-year program), or college/university (4- or more year program) for at least one complete term, at any time in the first year since leaving high school.

Competitive Employment (2): Leavers have worked for pay at or above the minimum wage in a setting with others who are nondisabled for a period of 20 hours a week or more for at least 90 days at any time in the year since leaving high school. This includes military employment.

Some Other Education (3): Leavers enrolled on a full- or part-time basis for at least one complete term at any time in the first year since leaving high school in an education or training program (e.g., Job Corps, adult education, workforce development program, or vocational technical school which is less than a 2-year program).

Some Other Employment (4): Leavers have worked for pay or been self-employed for a period of at least 90 days at any time in the first year since leaving high school. This includes working in a family business (e.g., farm, store, fishing, ranching, catering services, etc.).

OSPI State-Needs Project: Center for Change in Transition Services

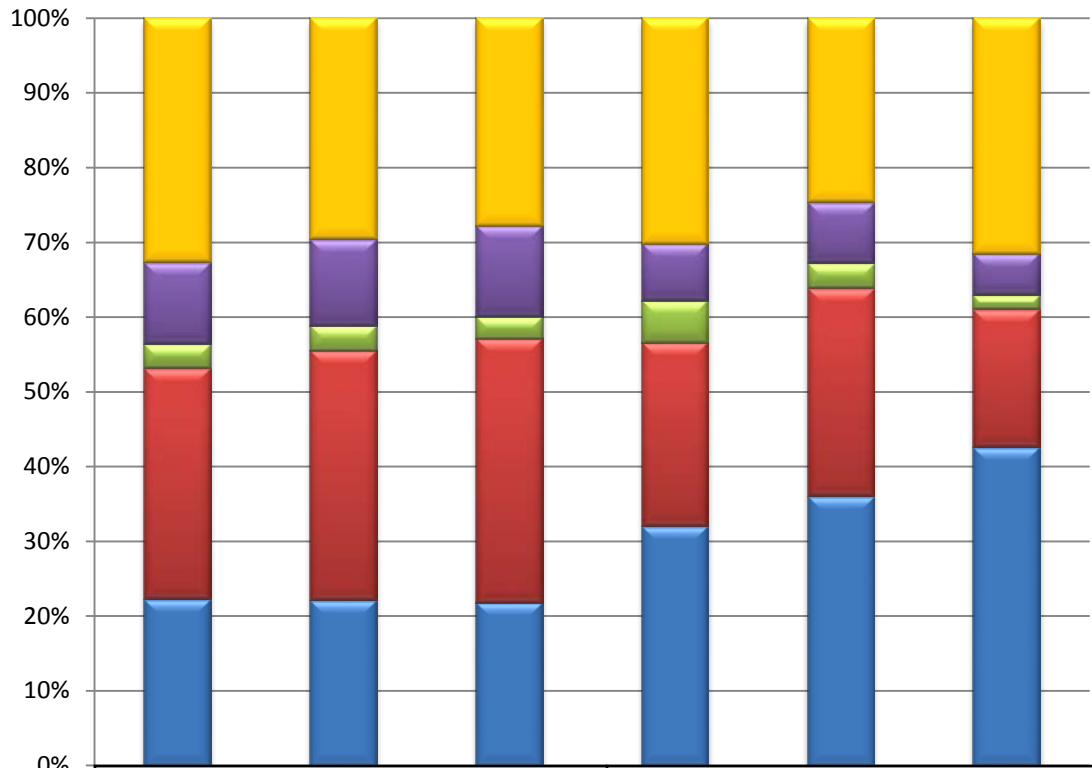
Email: ccts@seattleu.edu Website: www.seattleu.edu Phone: 206-296-6494 Fax: 206-296-2689

Seattle University 901 12th Ave, P.O. Box 222000 Seattle, WA 98122-1090

Washington State: Three Year Overview

2013-2016 Post-School Outcomes for Students who are Deaf or Hard of Hearing: Postsecondary Activities in the First Year after High School

Engagement Rate
for Respondents
by Leaver Status



	Total Respondents			Respondents who are Deaf or HH		
	2013-2014	2014-2015	2015-2016	2013-2014	2014-2015	2015-2016
Not Engaged	32.6 %	29.5 %	27.8 %	30.2 %	24.6 %	31.5 %
Other Employment	11.0 %	11.6 %	12.2 %	7.6 %	8.2 %	5.6 %
Other Education or Training	3.2 %	3.3 %	2.9 %	5.7 %	3.3 %	1.9 %
Competitively Employed	30.9 %	33.4 %	35.3 %	24.5 %	27.9 %	18.5 %
Higher Education	22.3 %	22.1 %	21.8 %	32.1 %	36.1 %	42.6 %

Higher Education (1): Leavers have been enrolled on a full- or part-time basis in a community college (2-year program), or college/university (4- or more year program) for at least one complete term, at any time in the first year since leaving high school.

Competitive Employment (2): Leavers have worked for pay at or above the minimum wage in a setting with others who are nondisabled for a period of 20 hours a week or more for at least 90 days at any time in the year since leaving high school. This includes military employment.

Some Other Education (3): Leavers enrolled on a full- or part-time basis for at least one complete term at any time in the first year since leaving high school in an education or training program (e.g., Job Corps, adult education, workforce development program, or vocational technical school which is less than a 2-year program).

Some Other Employment (4): Leavers have worked for pay or been self-employed for a period of at least 90 days at any time in the first year since leaving high school. This includes working in a family business (e.g., farm, store, fishing, ranching, catering services, etc.).

OSPI State-Needs Project: Center for Change in Transition Services

Email: ccts@seattleu.edu Website: www.seattleu.edu Phone: 206-296-6494 Fax: 206-296-2689

Seattle University 901 12th Ave, P.O. Box 222000 Seattle, WA 98122-1090