

SEATTLE UNIVERSITY

CENTER FOR LEADERSHIP FORMATION EXECUTIVE EDUCATION

UNIQUE PROGRAMS

- Leadership-focused curriculum** designed for mid- to senior-level professionals
- Certificate and degree programs** that enable students to continue working full-time
- Compact 2-3 day monthly classes** that accommodate demanding schedules
- One-on-one executive coaching** with seasoned executive coaches

CHALLENGE MORE THAN YOUR INTELLECT

Our rigorous instruction in core business concepts provides the acumen needed to make decisions at the highest levels of organizations. What sets us apart is a unique leadership curriculum which provides powerful experiential learning. Graduates consistently report that our programs were not only formative, but *transformative* for them, both personally and as leaders of others.

Seattle University's Executive Leadership programs challenge students to reflect on their perspectives, assumptions, beliefs, and values. Using that insight, students shape and reshape their approach to leadership, and evolve as individuals and as members of a greater community. They leave the programs with a deep understanding of how their influence can help promote a more just and humane world, and with the experience to guide others in doing the same.

TYPICAL CLASS PROFILE

- MALE: 58%
- FEMALE: 42%
- ETHNIC MINORITY: 20%

EDUCATION

- ADVANCED DEGREE: 29%

STRONG REGIONAL NETWORK

- LIVE WITHIN 50 MILES OF CAMPUS: 88%

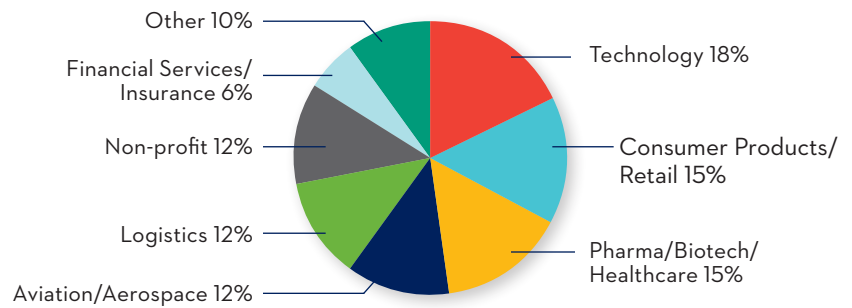
AVERAGE WORK EXPERIENCE

- PROFESSIONAL: 20 YEARS
- MANAGERIAL: 15 YEARS

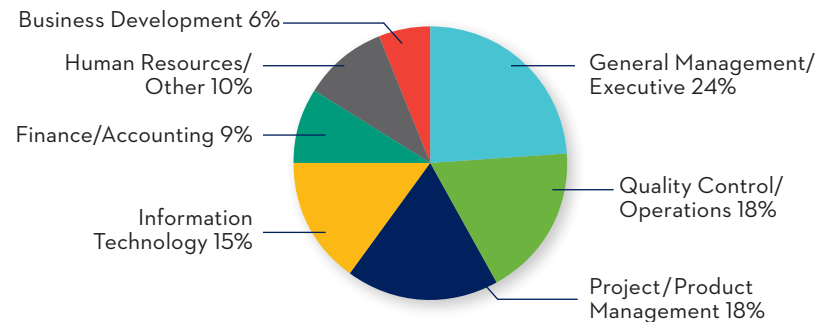
Rigor. Relevance. Relationships. >>> Results



INDUSTRY MIX



JOB FUNCTION



CENTER FOR LEADERSHIP FORMATION

For details about our executive programs and admissions information, visit us at www.seattleu.edu/albers/executive